

# CHS SERIES

## SINGLE GIRDER OVERHEAD CRANE



**Address:** Room 902, Building 6, No. 26 Dongqing Street, Zhengzhou, Henan, P.R.China; P.C.: 450000

**Tel:** +86-371-5532 8269

**Email:** [inquiry@clescrane.com](mailto:inquiry@clescrane.com)

**Website:** [www.clescrane.com](http://www.clescrane.com)

Clescrane retains the rights to change on product design and specs. at any time.  
When purchase and delivery, subject to our actual products.



S.W.L.  
20 Ton

CLESCRANE

>>CHS SERIES SINGLE GIRDER OVERHEAD CRANE

No.220605005

CLESCRANE

No.220605002

CLESCRANE

3

## ABOUT US

We are the supplier of safe and efficient automatic storage solutions for paper rolls. CLESCRANE China understands the value that efficient storage can bring to paper and packaging enterprises. Our value is to help you improve your business and productivity.  
CLESCRANE, I won't sell the future for a short term profit!



Evangelina  
Brand image spokesperson

CLESCRANE®



10t

## CHS Series Single Girder Overhead Crane

Max. Load

20Ton

Span

7.5-35m

Working Class

A5 A6

### Supplied with CH series wire rope electric hoist

- Design is based on FEM and CMAA70 standards.
- With optimizing design and low headroom, the crane height is greatly reduced, to achieve higher lifting height under the same plant height.
- With optimizing design and low wheel pressure, the crane height is greatly reduced, to achieve greater lifting capacity weight under the same strength of the workshop.
- Crane girders made of computer-optimised box sections.
- End carriages of torsionally rigid, welded box-section design.
- Wheel group with adjustable structure, to prevent the rail from gnawing.
- Crane is controlled by Three-In-One mechanism with frequency conversion, to reduce the equipment noise.
- Overload limiter, height limiter, Stroke limiter, photoelectric limiter and other security measures are equipped according to different working conditions, crane black box with recorded analysis functions can be added based on the customer requirements.
- Lifting capacity: 1~20 t, non-standard customized crane can be produced.

### Supplied with CCH series chain electric hoist

- End carriages of optimised design to suit the structure.
- Rigid standard I-beam girders for optimum load distribution.
- Efficient, fatigue-free load handling thanks to ergonomically designed control units.
- Low-sway travel motions for smooth handling and exact positioning of loads.
- Crane components offering high safety and reliability.

### Personalized configuration

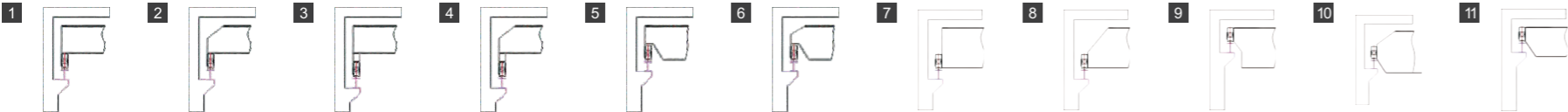
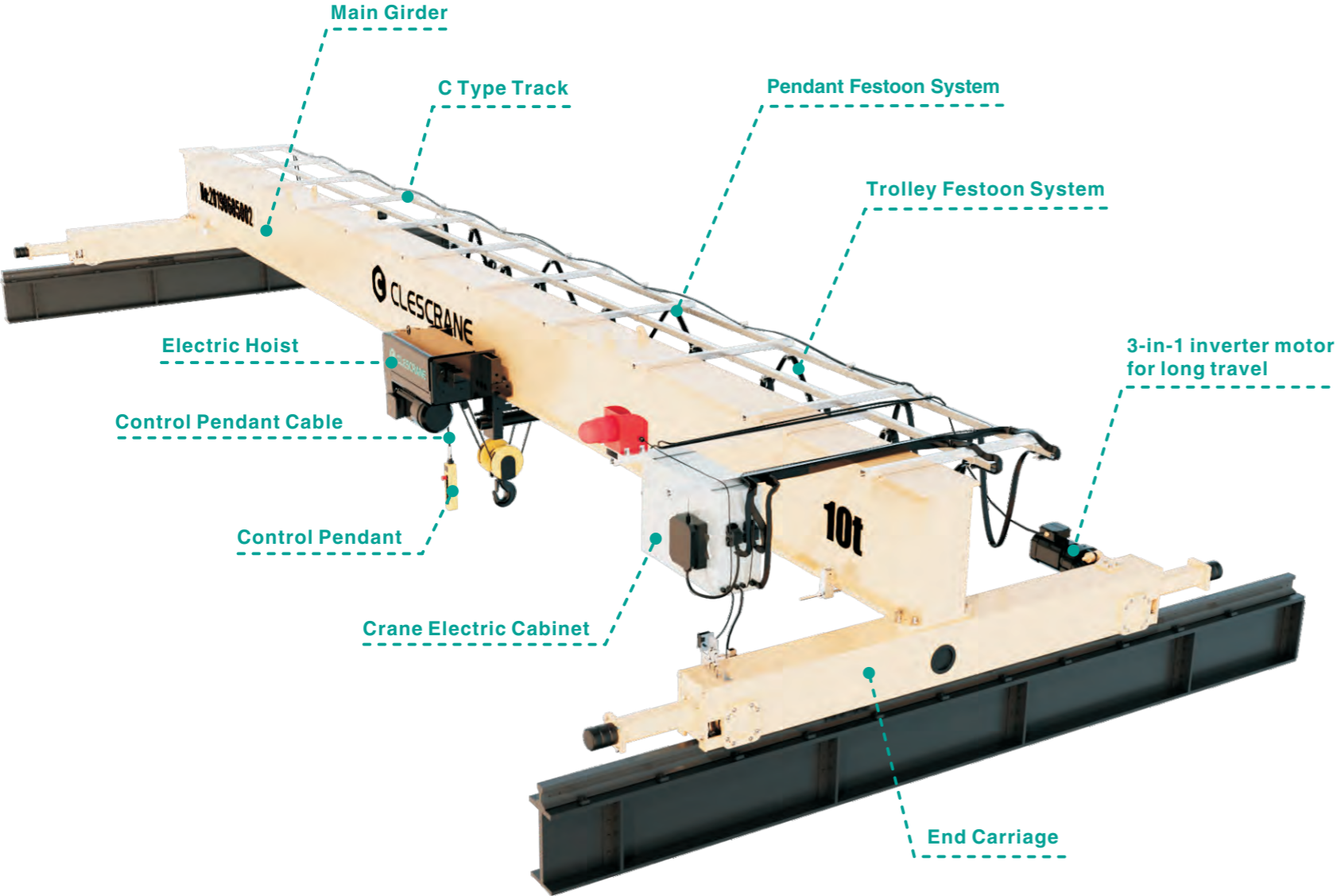
- Optimum integration into existing and new buildings.
- Control pendant suspended for separate travel on the crane girder with display for installation monitoring.
- Radio control with display and proportional pushbuttons possible (optional).
- Optional radio control with power and signal transmission via energy chain system.

Clescrane CHS series single girder overhead cranes feature maximum rigidity for a minimum deadweight. This keeps the load on the crane runway to a minimum – and a cost-effective design can be selected for the building. This approach provides you with a cost-effective solution.

# CHS Series Single Girder Overhead Crane

Controls to meet your needs

- ☐ Pendant control
- ☐ Remote control



Crane type	CHS
Profile-section girder	Box type
Max. load capacity* [t]	20
Max. span* [m]	25.5
Travel speed [m/min]	3.2-32
Cross-travel speed [m/min]	5-20
Lifting speed [m/min]	0.8/5

Hoist unit		CH rope hoist / CCH chain hoist
Types	1 Top connection, standard	√
	2 Top connection, girder bevelled on top	√
	3 Top connection, raised	√
	4 Top connection, raised, girder bevelled on top	√
	5 Top connection, girder bevelled below	√
	6 Top connection, girder bevelled on both sides	√
	7 Standard side connection	√
	8 Side connection, girder bevelled on top	√
	9 Side connection, low-headroom design	√
	10 Side connection, girder bevelled on both sides	
	11 Side connection, girder bevelled below, low-headroom design	√

Clescrane Optionals:

- ☐Aseismic Floodlight
- ☐Wireless remote control
- ☐Second brake for lift
- ☐Second lifting limit
- ☐Lifting frequency
- ☐Heating dehumidification
- ☐End stop for hook
- ☐Rain cover for trolley
- ☐Non-standard hook
- ☐Electric rotating hook
- ☐Inch
- ☐Anti-sway
- ☐End stop for long travel
- ☐Stainless steel Hook
- ☐Maintenance crane cage
- ☐W Hook(>100tons W hook is standard)
- ☐Brush sweep rail
- ☐Improve one grade of the hook number
- ☐Vertical lifting
- ☐Stainless steel shell for cable drum
- ☐Stainless steel electric control box
- ☐Horizontal guide sheave(If the span is over 35m,we recommend)
- ☐Increase the display of the load(standard font size 500x230)
- ☐Increase the display of the load(standard font size 900x230)
- ☐The reducer bearing brand is changed to SKF or NSK
- ☐Only replaced the bearings of the hoist by SKF or NSK
- ☐Hoist with horizontal guide wheel
- ☐Crane with horizontal guide wheel
- ☐Anti-skewing and slanting lift
- ☐Trolley with magnetic suction device

For lifting motor:

- ☐Forced cooling fan
- ☐Manual release device
- ☐IP56 protection class
- ☐Wear detection



## CH-B Series Wire Rope Electric Hoist (for single girder crane)

Lifting Capacity: 1-20t

1. Pole changing double-speed motor hoisting with Three-in-One structure, Stable and reliable operation, small volume.
2. Highly efficient electric motor with hard tooth surface reducer, to achieve the low energy consumption and large output torque.
3. The electromagnetic brake can adjust itself automatically with high precision, to achieve fast and reliable braking with low noise.
4. The steel wire rope with high strength and high flexibility, to achieve greater and safer lifting.
5. High strength nylon rope guide and pulley, its self-lubricating help to achieve a longer service life of the steel wire rope.
6. High strength alloy wheel group, to achieve a long service life for the wheels.
7. Modular design to realize the flexible combination.
8. The maximum lifting capacity of the single-girder is 20t, the maximum lifting capacity of the double-girder can reach to 100t

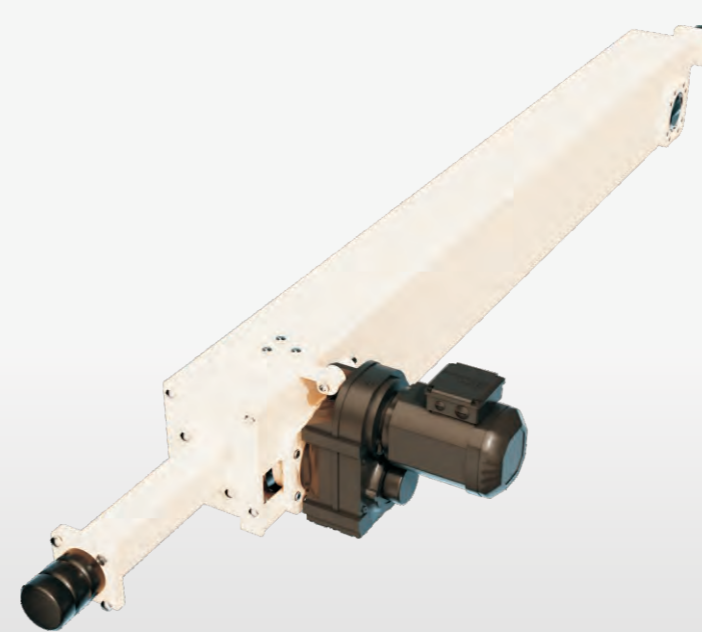


## CCH Series Chain Electric Hoist

The lifting capacity of Clescrane CCH series electric chain hoist is from 150kg to 10 000kg. The chain hoist has features of compact structure, modular design and free maintenance. The modular design helps us to have a flexible combination to meet customers' individualized requirements. CCH series chain hoist can be matched with manual or electric trolley, and can be installed on light crane, monorail crane, jib crane and overhead crane. The double speed electric trolley and electric lifting will provide you flexible and high efficiency material handling solution. CCH chain hoist is the best choice for your light and medium lifting need.

More optional functions can be provided according to your need. CCH series chain hoist has fixed type, manual trolley type and electric trolley type.

You can choose different optional functions according to your real need. We will help you to get the best lifting way.



## CB-C Series End Carriage

Our crane end carriage adopts a variety of advanced design concept, modular design, and compact structure. Compatibility is higher. According to the working condition requirement, perfect travelling drive solutions are customized, with smooth, safe and reliable operation with high flexibility. End carriage has box structure with resistance to distortion and is equipped with Cles module systematic full set of gear motor and travelling wheels, adapting to various lifting equipment operation requirements without any damage to the track.



## Basic Electric Control

The basic electric control of crane is the center of crane control. Usually the place where the crane is prone to failure is the basic electric control. Therefore, it is very important to have a high standard electric control system. CLESCRANE attaches great importance to the development of the electric control system. We have an independent design team and a professional electrical assembly team to plan the electrical wiring for each crane, The user only needs to plug in the corresponding aviation plug according to the installation manual at the site to use it smoothly. Each electric cabinet will be powered on for testing before leaving the factory to fully ensure safety. If you have this need, please contact our product consultant. Standardized design will make you feel different.

## Tissue Manufacturing Company in Ghana

### Customer

Tissue Paper Manufacturing Ghana was established in 2020. With state-of-the-art technology, Tissue Ghana is able to produce the softest and most absorbent toilet paper that is environmentally friendly.

Ghana Tissue Manufacturing currently has a total operating capacity of 25,000 metric tons per annum in its paper converting operations. Great customer satisfaction is the core value of Ghana Tissue Manufacturing Company, so Ghana Tissue Manufacturing Company is going the extra mile to provide customized private label services to local and foreign retail chains.

To be the number one leading brand in toiletries, making quality and affordable products - Ghana Toilet Paper Manufacturing Company Mission.

### New workshop with new Clescrane overhead crane

At its new plant in the city of Accra, the company needed overhead cranes for lifting paper machines and finished toilet paper. The Clescrane CHS range of standard single girder overhead cranes can best meet their needs. On October 8, 2021, Ghana Tissue Manufacturing Company ordered 2 sets of CHS series single girder bridge cranes (CHS5T-14.5M H=5.8M 1 set, CHS10T-9M H=5.5M 1 set) from Clescrane.

### Turnkey projects

"The overhead cranes have been installed and tested and all the cranes are working fine. We are happy to announce the completion of this turnkey project," said Renato - representative of Clescrane Ghana service provider. "The contractor even said that our crane is one of the best here in Ghana so far."



"The contractor even said that our crane is one of the best here in Ghana so far."  
Renato said - Clescrane Ghana service provider representative.

# Spanish High Temperature Superconductor Company

## Clescrane overhead crane -- the ideal solution

One customer, one solution, Clescrane in accordance with the specific situation to achieve the perfect customization of each crane, to ensure that each lifting solution can just meet customer needs. Since the workshop of Spanish High Temperature Superconductor Company has track, the track to the lowest point of the workshop is only 1100mm, combined with the roof of the workshop is arc, in order to make the crane and the lowest point of the workshop have enough safety allowance, the two ends of the main beam are inverted cutting Angle;

In addition, the original track tread elevation of the Plant of Spanish High Temperature Superconductor Company is 4585mm, but the lifting height is required to be 4500mm; In order to best adapt to the building structure, that is, to make full use of the available space between the track and the ceiling, but also to meet the requirements of lifting height, Clescrane decided to use the main end beam connection form of side connecting seat type. In July 2017, Spain High Temperature Superconductor Company decided to order two single girder overhead cranes (CHS5T-16.345m H=4.5m A6) from Clescrane, used to lift their production of medicine, cosmetics, video and other industries of equipment stainless steel filling and packaging products.

## The crane lifts and travels synchronously

When large filling products need to be loaded onto trucks, the two overhead cranes can be raised and operated synchronously by a single worker. The synchronous action of the crane makes it easy and safe to move, store and load the truck. Both cranes are equipped with travel limit switches to ensure that the cranes automatically slow down and stop as they approach their travel range in any direction.

Clescrane wishes the Spanish company great success in the development of the filling and packaging industry.

As a global company, Clescrane is able to leverage our extensive industry experience and expertise as well as our extensive service network to provide tailored solutions, cost-effective products and a lifetime of worse-free service.



# Australian Steel Structure Factory

Australian Steel Structure Factory, established in the year of 2003, is a professional Company who can provide design, manufacture and installation of steel structure for buildings of business, industry and residence. In recent years, its factory has been enlarged greatly and now need more overhead cranes to meet the demands of the increasing business.

According to customer's needs and shop structure, our CHS series single girder overhead crane was recommended to the customers to solve the problems of shorter upper height of the shop.

In December, 2016, Clescrane and Australian Steel Structure Factory established the cooperation and signed a contract of two sets of CHS single girder overhead cranes (CHS 3.2t-13.8m H=6m, A5).

Manufacturing industry has been historically one of the main industrial sectors in which Clescrane solutions have met its demanding needs effectively. Numerous satisfied clients support Clescrane tailor made solutions. Our experience in the sector allows us to drive our clients towards efficiency improvement whichever process/es they are in.

The two sets of overhead cranes for Australian Steel Structure Factory has been installed smoothly and the cranes work in good condition. Customer is very satisfied with the solution and product of Clescrane and wishes to be the long-term cooperative partner. Customers' recognition is the motivation of Clescrane development. Clescrane will continue with providing the best reliable, high efficiency material handling solution and high quality products to our customers.

## Puerto Rico Construction and Prefabrication Company

Puerto Rico Construction and Prefabrication Company was established in 1959 and has more than 60 years of experience in the electrical industry. It is mainly engaged in electrical contracting business in Puerto Rico, with an annual output value of about \$60M +.

Safety first is the basic principle of Puerto Rico Construction and Prefabrication Company. In compliance with the basic requirements of OSHA 1910.179 Occupational Safety and Health Administration and ASME.b30.2.2005 Overhead and Gantry Cranes standards, the reliability, safety and low failure rate of Clescrane's lifting equipment made the customer very satisfied with this cooperation.

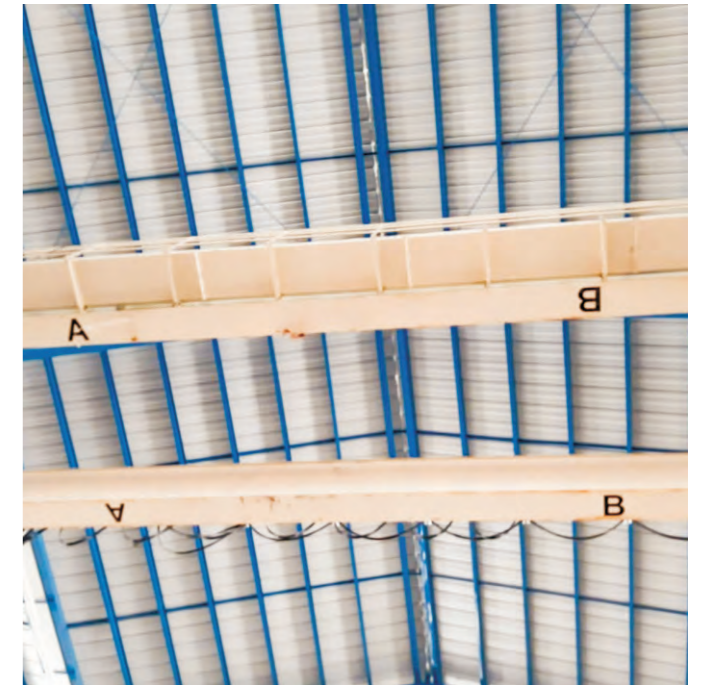
On June 11, 2019, Puerto Rico Construction and Prefabrication Company gave Clescrane the contract of 2 sets of single girder bridge crane (CHS5T-15.945m H=3.688m A5/M5), rail beams, and installation guide services for 10 days.

The guide installation service originally scheduled to start around February 15, 2020. Due to the Covid-19, the Clescrane team could not go abroad to Puerto Rico. Then, with a time difference of 11 hours, the Clescrane team provided the customer's installation team installation instructions with remote online. Finally, the 2 bridge crane successfully completed the dynamic and static load test and has been put into function.

The project manager of the Puerto Rico Construction and Prefabrication Company said: " The service provided by Clescrane is great. Congratulations to you for successfully installing the first and second bridge cranes on the continental United States. I believe that more and more Clescrane lifting equipment will be installed in the United States in the future."



Puerto Rico Construction and Prefabrication Company



## Tissue Paper Factory in Mexico

In daily life, paper is used at anytime and anywhere. In order to meet people's growing demand for paper, the Mexican paper mill, which was established in 2000, has built a new plant. It manufactures tissue paper for the production of napkins, traditional and institutional toilet paper, hand towels, kitchen towels, among other products, adjusting to market needs.

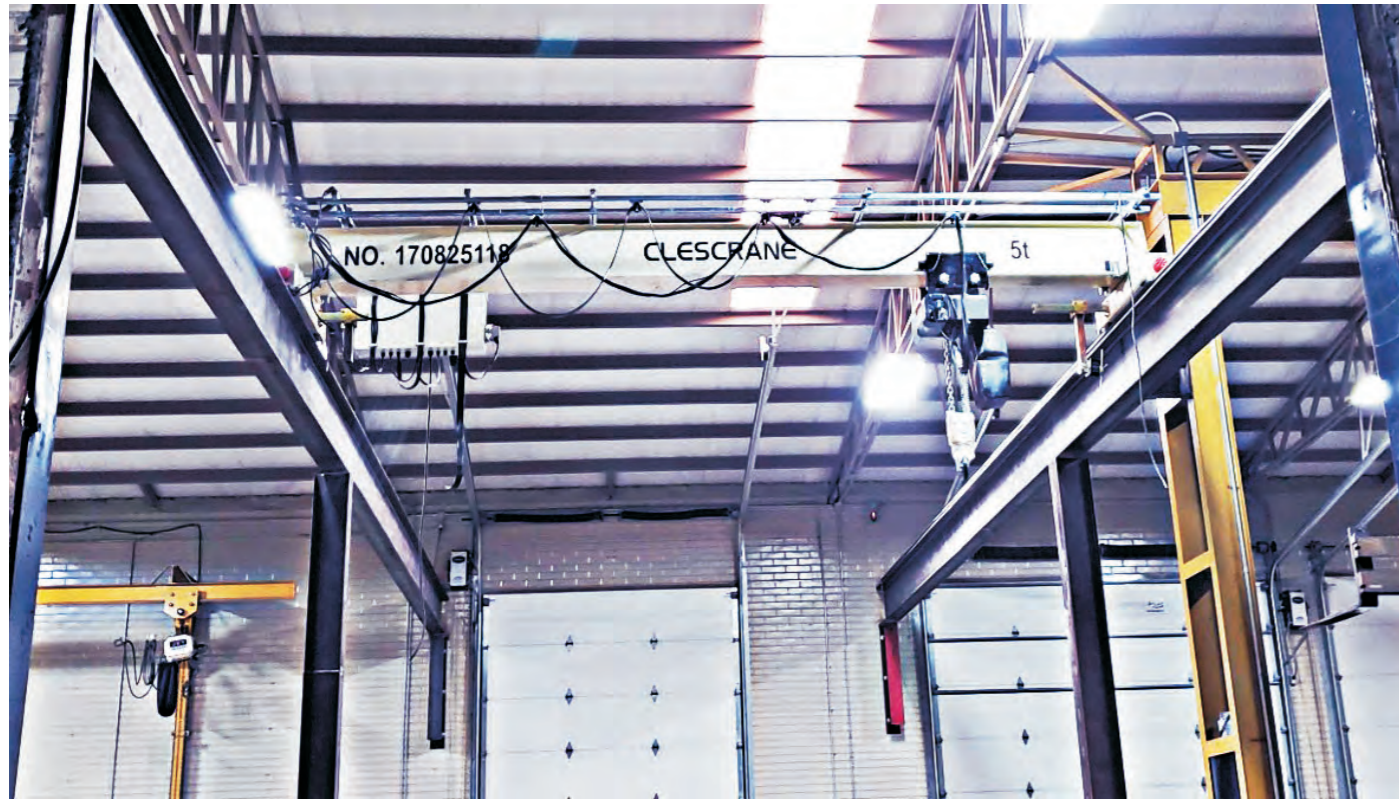
In July 2016, the Mexican paper mill purchased 2 sets of overhead cranes (CHD (15+10) T-16.59MH-8.5M A5 & CHS5T-16.59M-8.5M A5) from CLESCRANE for coil hoisting in the new plant. With the continuous expansion of the market, on January 10, 2020, the Mexican paper mill ordered 3 overhead cranes again from CLESCRANE (1 set of CHD15T+10T-17M H=14M A6 & 2 sets of CHS5T-17M H=14M A6) for a new production line at Tlaxcala.

The new factory in Tlaxcala is located at an altitude of 2500 meters. The altitude not only affects the heat dissipation of the motor, but also affects the excitation of the motor. In the high altitude area, we usually consider the reduction of the motor capacity. At the altitude of 2500 meters, our derating coefficient is 0.9, which means that only 9 tons of weight can be lifted for a 10 ton hoist in this case. CLESCRANE has focused on the influence of the local altitude of 2500 meters on the whole machine design and component selection, so as to provide customers with the most appropriate scheme.

According to the customer's demand, the double girder overhead crane (15+10Ton) realizes the simultaneous lifting of double hoists, and the crane that run on the same runways are equipped with photoelectric anti-collision device. In addition, the double girder overhead crane (15+10Ton) adopts an eight-wheel structure. The eight-wheel structure not only allows the end carriage to be disassembled into three sections, which is convenient for transportation, but also disperses the wheel pressure, which greatly extends the life of the track, rail bearing beam, and column, and facilitates adding new crane on the same span in the future.

This year marks the 20th anniversary of the Mexican Paper Mill and the new cranes have been put into production. The management of Papelera Mexicana said about the second cooperation with CLESCRANE: "For us, the price of these devices is reasonable and they can be operated continuously. CLESCRANE has improved our second batch of cranes to ensure more reliable operation."

The ever-increasing needs of customers are the driving force behind our progress, and a good reputation trumps all advertising. Based on our knowledge and experience in the lifting market, CLESCRANE always provides customers with efficient, safe and cost-effective lifting solutions and equipment, and accompanies customers to develop together.



## Mexican Importer

Mexican importer is mainly engaged in the import and sales of machinery and equipment.

In August 2017, our Mexican importer purchased four CCS series single girder overhead cranes from CLESCRANE for maintenance of equipment in the workshop.

CCS5t-5.8m H=4.4m A5 1 set

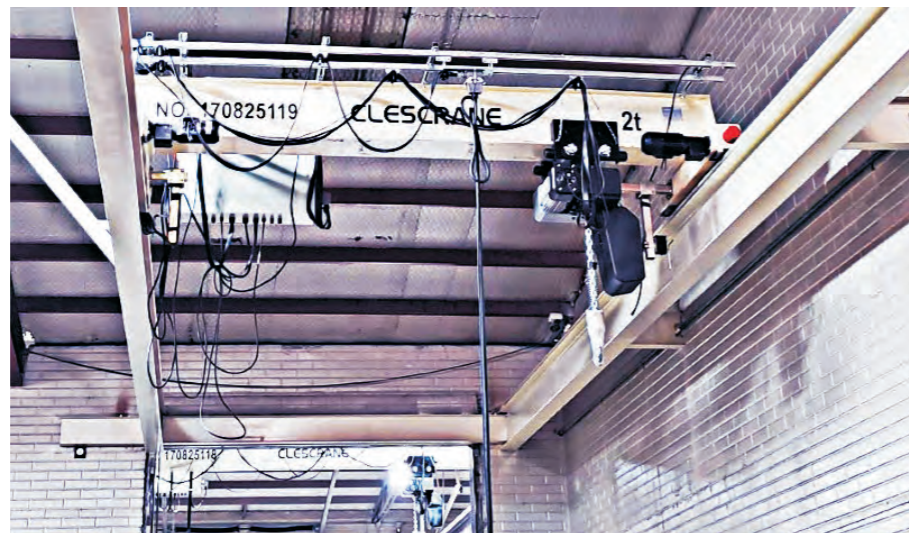
CCS2t-3.58m H=3.8m A5 1 set

CCS2t-4.87m H=3.8m A5 2 sets

Now the cranes have already been well completely installed and officially put into use. Our Mexican importer customers are very satisfied with the products and services of CLESCRANE.

CLESCRANE will work closely with you to achieve the perfect customization of each crane to ensure that each lifting solution can meet your lifting needs properly .

If you have any questions about lifting business, feel free to contact us at [inquiry@clescrane.com](mailto:inquiry@clescrane.com).



## Kenya Grain Bulk Distribution Company

Kenya Grain Bulk Distribution company was build in the year of 2000. It is a private enterprise integrated with grain distribution. It has its own port handling ship, mass transit terminal, large warehouse dock, bag storage and a series of facilities of local transportation.

With the development of the business, the Kenya grain bulk distribution company has built a new fabrication workshop for processing and manufacturing grain bulk storage tanks. In order to improve productivity, they need to purchase the crane equipment.

The detailed service concept ensures the high level of availabilityof the good quality lifting equipment. Detailed understanding of the customer's actual situation and requirements, we recommend the CHS series bridge crane.

CHS series bridge crane is powerful and reliable, which is capable of lifting capacity up to 20 tons. It is a perfect choice for general manufacturing.

On June 3, 2017, Clescrane signed two sets of CHS5t - 14.5 m H = 6m, A5, with Kenyan customers.

“when we need more crane equipment , we are glad to choose Clescrane for cooperation “, Kenya food distribution company says .

In the past years , Clescrane get more and more orders from African market and gained more and more praise and good reputation . Clescrane will provide customer most safety reliable, and high efficiency materials handling solution and high quality products .

# NETWORK OF SERVICE PROVIDERS

CLESCRANE doesn't want the business to grow too fast. We want to be a slow company with responsibility. With the expansion of business, we will gradually cultivate more professional localization service partners.

- Central Africa · 1
- Angola · 2
- Mali · 2
- Ethiopia · 1
- Tanzania · 2
- Namibia · 2
- Niger · 1
- Kazakhstan · 2
- Kuwait · 2
- Qatar · 2
- The united Arab emirates · 1
- Nigeria · 2
- Ghana · 4
- Kenya · 1
- South Africa · 3
- Russia · 2
- Bangladesh · 2
- Pakistan · 2
- Thailand · 3
- Malaysia · 1
- Papua New Guinea · 1
- Australia · 2
- Britain · 4
- Poland · 2
- Austria · 2
- Croatia · 1
- Italy · 1
- Turkey · 2
- The United States · 2
- Mexico · 4
- Honduras · 1
- Salvador · 1
- Costa Rica · 3
- Panama · 1
- Puerto Rico · 1
- Venezuela · 1
- Colombia · 1
- Ecuador · 3
- Peru · 2
- Brazil · 1
- Bolivia · 1
- Paraguay · 1
- Uruguay · 1
- Argentina · 1
- Chile · 3

