



Address: Room 902, Building 6, No. 26 Dongqing Street, Zhengzhou, Henan, P.R.China; P.C.: 450000

Tel: +86-371-5532 8269

Email: inquiry@clescrane.com

Website: www.clescrane.com

Clescrane retains the rights to change on product design and specs. at any time.
When purchase and delivery, subject to our actual products.

JIB CRANE



CLESCRANE 980kg

S.W.L.
10 Ton

© WWW.CLESCRANE.COM

No.220605005

CLESCRANE

No.220605002

CLESCRANE

3

ABOUT US

We are the supplier of safe and efficient automatic storage solutions for paper rolls. CLESCRANE China understands the value that efficient storage can bring to paper and packaging enterprises. Our value is to help you improve your business and productivity.
CLESCRANE, I won't sell the future for a short term profit!



Evangelina
Brand image spokesperson

CLESCRANE®

JIB CRANE

Clescrane jib crane offers choices of different specifications and models. It also can be tailor made to suit customer specific requirements on lifting capacity, maximum angle of slew, jib arm length, and functionalities. With a maximum load capacity ranging from 250kg to 10000kg, the jib crane is suited to transporting materials in the small work area which greatly reduces material handling time and labor burden as well as improves working efficiency.

Depending on the coverage of working areas, Clescrane offers jib cranes with slewing angle of 180/270/360 degree. According to the installation and structure, jib cranes can be divided into wall mounted jib cranes, and pillar mounted jib cranes. According to the rotation way, jib cranes can be divided to manual jib cranes and electric jib cranes. Except this, Clescrane has more options for the customers to meet the requirements.

ADVANTAGES

SIMPLE INSTALLATION

Wall-mounted jib cranes can be simply mounted onto the walls without using any ground space. Pillar mounted jib crane will require a pre-installed pillar structure, and the anchorage of which can be concreted or via heavy duty fishplates. If required, we can also provide anchor bolts and templates.

REDUCE MANUAL HANDLING IMPROVE WORK EFFICIENCY

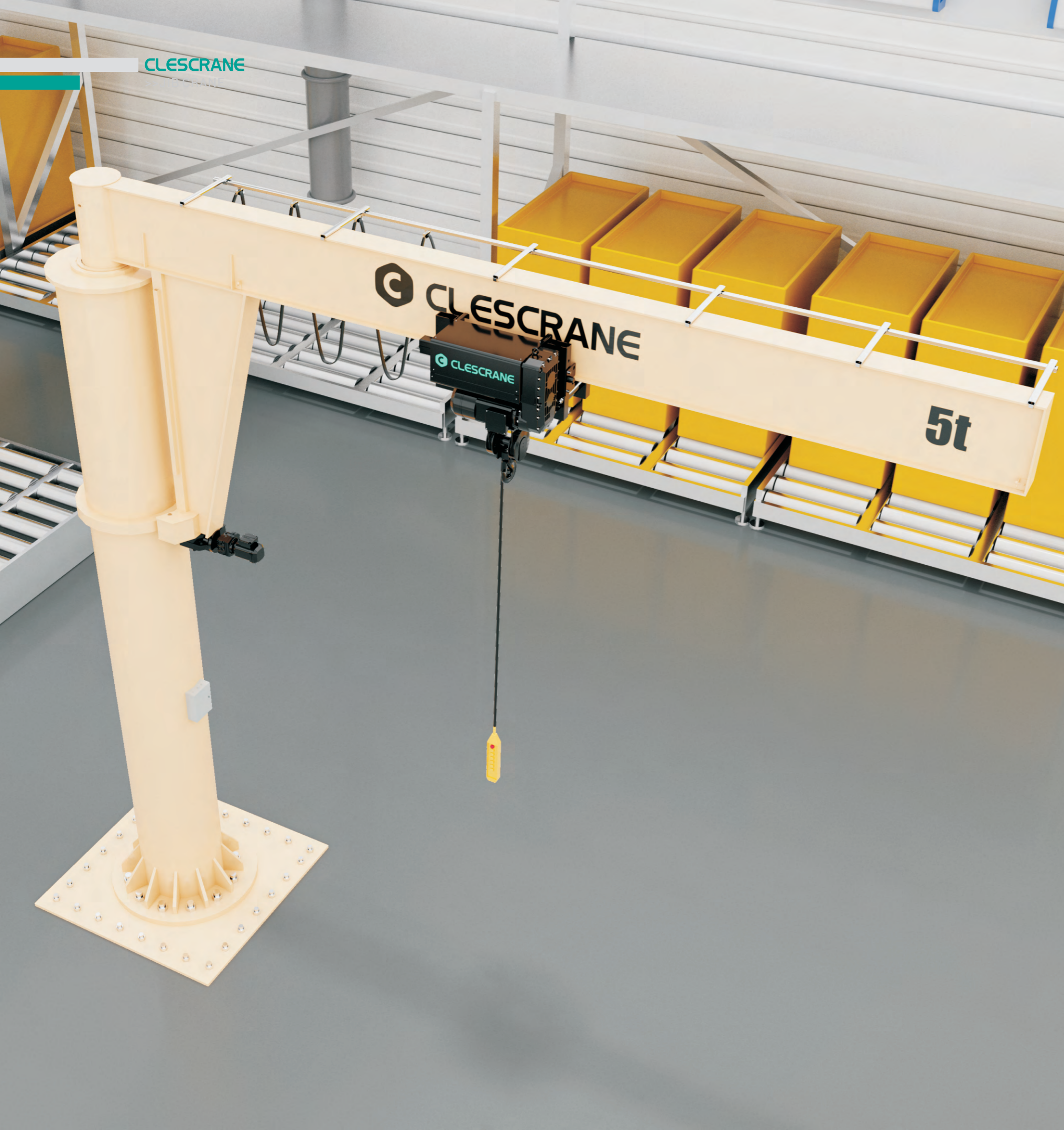
A jib crane equipped work station will enable a great work efficiency and improved safety with the minimal manual handling. The return of investment on jib crane is significant, it's particularly true for small working areas where multiple workers need to access lifting facilities simultaneously. In these scenarios, jib cranes for each work stations would be ideal for its cost effectiveness.

PRECISE POSITIONING EASY OPERATION

Clescrane offers options of CCH electric chain hoist or CH electric wire rope hoist to its jib cranes, both of them provide easy operation and precise positioning. Featuring with great ergonomic design, Clescrane delivers only the best products and solutions to meet customers' requirements.

UNMATCHABLE COST EFFECTIVENESS

All parts are highly standardized and manufactured in series under the most stringent quality control and quality assurance system. The optimal solution is promised via our discussion during project definition and design stages.



CJZ SERIES COLUMN MOUNTED JIB CRANES

Under many conditions there is no limit to the column mounted jib crane to be used alone or to cooperate with other cranes in the plant. The whole material handling solution is clean and neat. You can consider purchasing in the early stage of the building or later. In terms of overall investment saving, Clescrane pays more attention than you.

The CJZ series column mounted jib crane lifting capacity ranges from 250kg to 5000kg. We provide suitable solutions to meet your specific requirements. For high efficiency and improved operating safety for workers, equipment and loads, CCH series chain hoist and CH wire rope hoist can be used and the operation can be manual or electric drive.

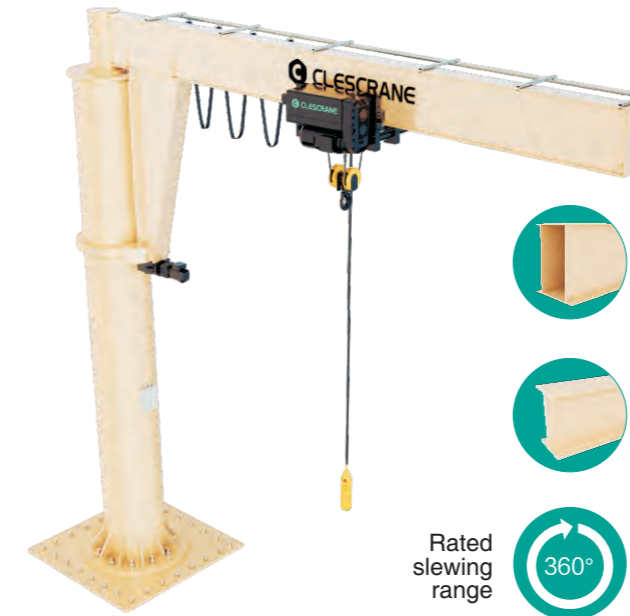
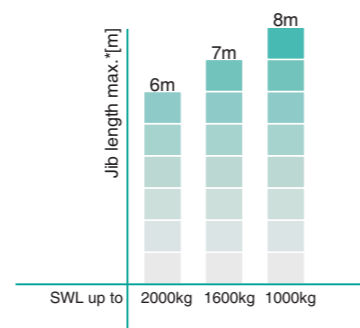
Clescrane column mounted jib crane ensures that all types of work pieces can be lifted and transported quickly and easily and stored gently and precisely. It is widely used in workshop, warehouse, wharf and other fixed places.

Higher safe working loads and nonstandard solutions for particular applications are possible.



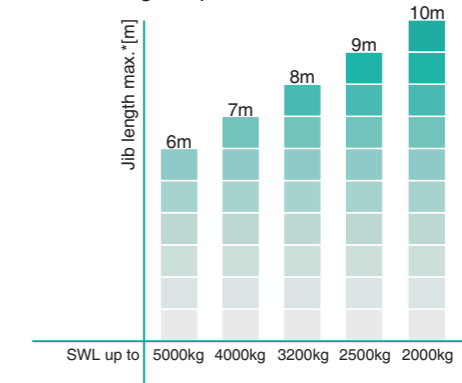
CJZ-B

1. Light self weight.
2. Smooth-slewing jib for easy manual operation.
3. Optimal highest hook position.
4. Optional electric hoist travel.
5. Load capacity: up to 2t SWL.
6. Jib length: up to 8m.



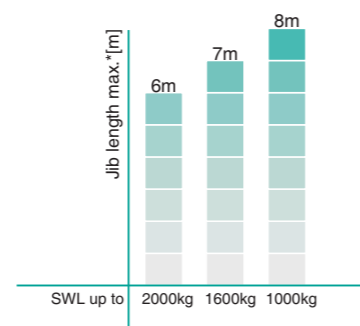
CJZ-D

1. Low headroom optimizes highest hook position.
2. Optional electric slewing gear.
3. Optional electric hoist travel.
4. Optional mobile control (standard with wire rope hoists).
5. Load capacity: up to 5t SWL.
6. Jib length: up to 10m.



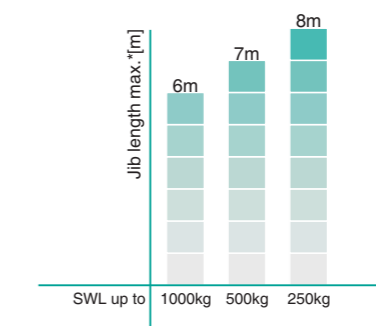
CJZ-A

1. Smooth-slewing jib for easy manual operation.
2. Optimal highest hook position.
3. Optional electric hoist travel.
4. Load capacity: up to 2t SWL.
5. Jib length: up to 8m.



CJZ-AL

1. Light self weight; can be installed even if floor or foundation conditions are difficult.
2. Almost effortless push trolley travel.
3. Load capacity: up to 1t SWL.
4. Jib length: up to 8m.
5. Rate slewing range: up to 300°.



* More specifications and non-standard products, please contact with CLESCRANE.

* More specifications and non-standard products, please contact with CLESCRANE.

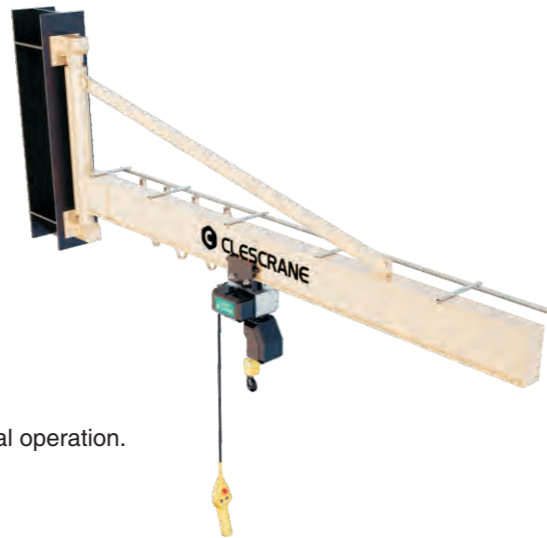


CJX SERIES WALL MOUNTED JIB CRANE

Wall mounted jib crane is widely used for material handling on work station, especially in some small operation area. With cantilever fixed to the wall or cement column or other load bearing components, its decisive advantage is saving the ground space for setting a column; simple to install, the ready-made standardized support saves a lot of complicated correction work; the low headroom design can meet the requirement of lesser space but higher hoisting height. It provides 180° rotation.

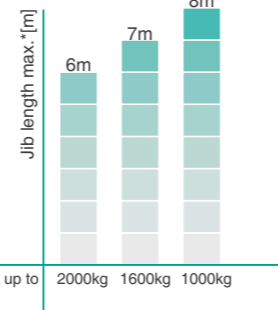


Rated
slewing
range



CJX-B

1. Light self weight.
2. Smooth-slewing jib for easy manual operation.
3. Optimal highest hook position.
4. Optional electric hoist travel.
5. Load capacity: up to 2t SWL.
6. Jib length: up to 8m.
7. Rated Slewing range: up to 180°.

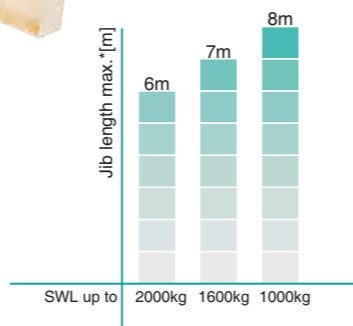


Rated
slewing
range

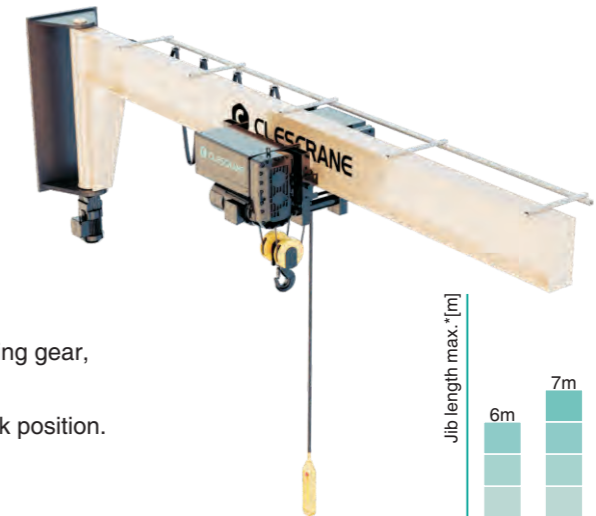


CJX-A

1. Smooth-slewing jib for easy manual operation.
2. Optimal highest hook position.
3. Optional electric trolley travel.
4. Load capacity: up to 2t SWL.
5. Jib length: up to 8m.
6. Rated Slewing range: up to 180°.



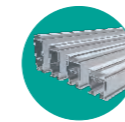
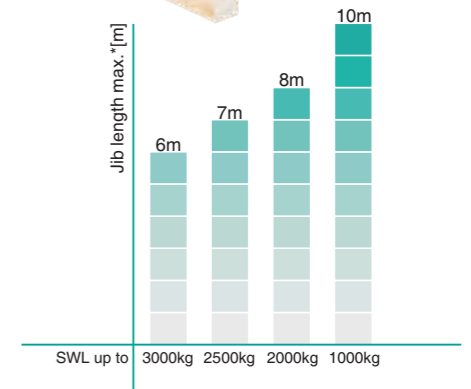
Rated
slewing
range



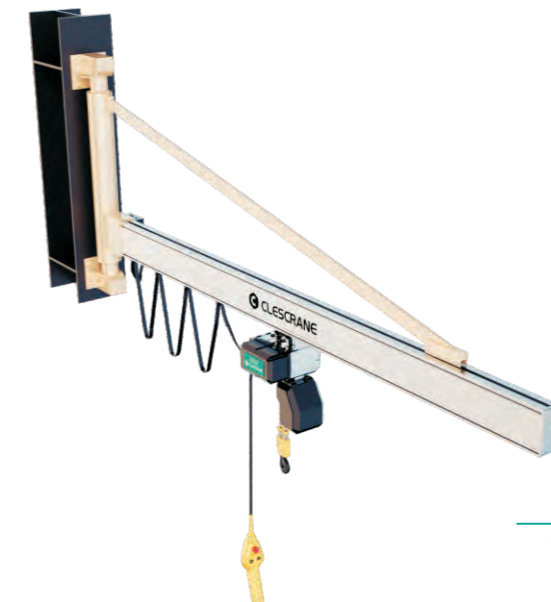
CJX-D

The illustration shows a crane with electric slewing gear, electric trolley travel and mobile control.

1. Low headroom offers optimal and highest hook position.
2. Optional electric slewing gear.
3. Optional electric trolley travel.
4. Optional mobile control (standard with wire rope hoists).
5. Load capacity: up to 3t SWL.
6. Jib length: up to 10m.
7. Rated slewing range: up to 180°.

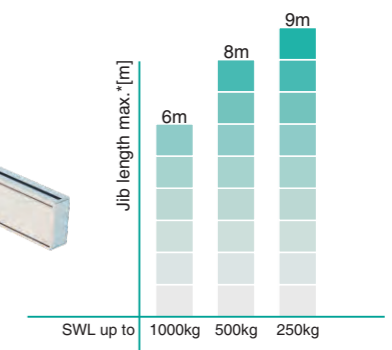


Rated
slewing
range



CJX-AL

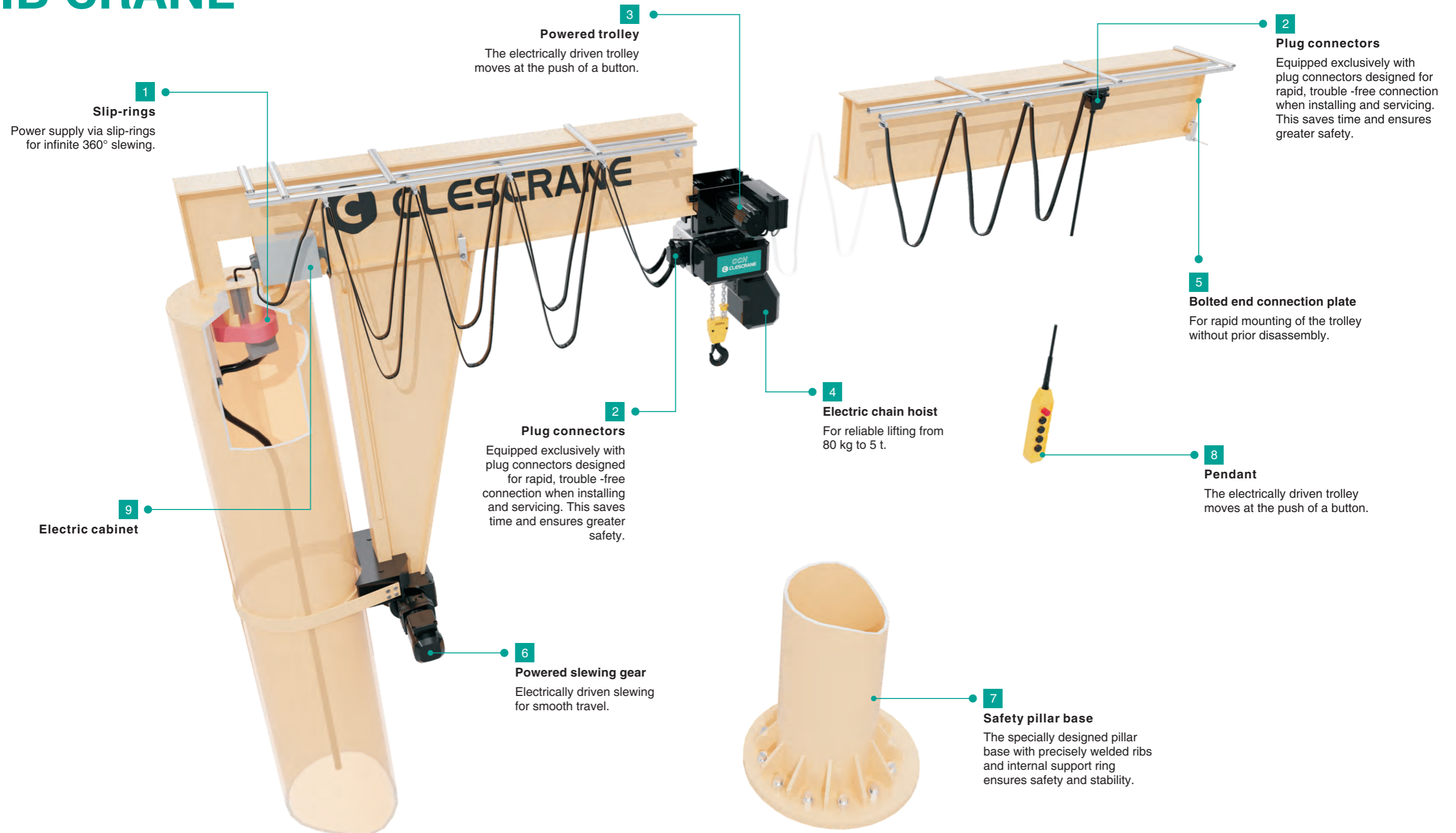
1. Light weight design; can be installed in lightweight buildings.
2. Almost effortless push trolley travel.
3. Load capacity: up to 1t SWL.
4. Jib length: up to 9m.



* More specifications and non-standard products, please contact with CLESCRANE.

* More specifications and non-standard products, please contact with CLESCRANE.

JIB CRANE



1

Slip-rings

Power supply via slip-rings for infinite 360° slewing.

3

Powered trolley

The electrically driven trolley moves at the push of a button.

2

Plug connectors

Equipped exclusively with plug connectors designed for rapid, trouble-free connection when installing and servicing. This saves time and ensures greater safety.

5

Bolted end connection plate

For rapid mounting of the trolley without prior disassembly.

4

Electric chain hoist

For reliable lifting from 80 kg to 5 t.

2

Plug connectors

Equipped exclusively with plug connectors designed for rapid, trouble-free connection when installing and servicing. This saves time and ensures greater safety.

9

Electric cabinet

6

Powered slewing gear

Electrically driven slewing for smooth travel.

7

Safety pillar base

The specially designed pillar base with precisely welded ribs and internal support ring ensures safety and stability.

8

Pendant

The electrically driven trolley moves at the push of a button.

JIB CRANE OPTIONAL

| Optional configuration supply overview* | | | | | | | | | | |
|---|---|-------|-------|-------|--------|-------|-------|-------|--------|---|
| Function/Functional unit | Optional configuration | CJZ-B | CJZ-A | CJZ-D | CJZ-AL | CJX-B | CJX-A | CJX-D | CJX-AL | Recommendation (R) / Note (N) |
| Electric drives | Electric trolley, 2-speed, 5/20 m/min | √ | √ | √ | × | √ | √ | √ | × | (R) loads of 500 kg or more and jib lengths longer than 4 m |
| | Electric slewing gear, 2-speed | × | × | √ | × | × | × | √ | × | (R) loads of 500 kg or more and jib lengths longer than 6 m |
| Travel limiters | Slewing limit stop as bumper rod | × | √ | √ | × | × | √ | √ | × | (N) on-site limit stop required |
| | Adjustable slewing limit stops | × | √ | √ | × | × | √ | √ | × | (N) available for simple retro-fitting |
| | Slewing limit switch | × | × | √ | × | × | × | √ | × | (N) braking function,braking and shutdown function |
| | Trolley travel limit switch | √ | √ | √ | × | √ | √ | √ | × | (N) braking function,braking and shutdown function |
| | Limit switch for electric chain hoist | √ | √ | √ | √ | √ | √ | √ | √ | (N) programmable upper and lower switch-off position via "teach-in"function |
| Operation | Mobile control unit runs length of jib | √ | √ | √ | × | √ | √ | √ | × | (R) for electric trolleys and slewing |
| | Controls on load hook | √ | √ | √ | √ | √ | √ | √ | √ | |
| | Remote control | √ | √ | √ | √ | √ | √ | √ | √ | (N) observe regulations for safety devices |
| Control | Electronic control/contact control, 48 V electric chain hoist | √ | √ | √ | √ | √ | √ | √ | √ | |
| | Infinitely variable hoist speed via frequency converter | √ | √ | √ | √ | √ | √ | √ | √ | (R) for particularly delicate lifting and lowering of the load |
| | Infinitely variable hoist trolley and slew drive motions | √ | √ | √ | √ | √ | √ | √ | √ | (R) for particularly delicate moving of the load |
| Electric chain hoist | 3/N/PE connection plug for auxiliary device | √ | √ | √ | √ | √ | √ | √ | √ | (N) only with direct control lift/lower |
| | Hours in operation counter | √ | √ | √ | √ | √ | √ | √ | √ | |
| | Safety load hooks | √ | √ | √ | √ | √ | √ | √ | √ | |

* Some combinations of optional component configurations may not be compatible. Advice freely available upon request.

HOISTING MECHANISM

MORE CHOICES AND
FLEXIBLE COMBINATIONS
TO MEET YOUR
DIFFERENT NEEDS

CCH-F
Chain Electric Hoist



CCH-P
Chain Electric Hoist



CCH-E
Chain Electric Hoist



CCH-A
Chain Electric Hoist



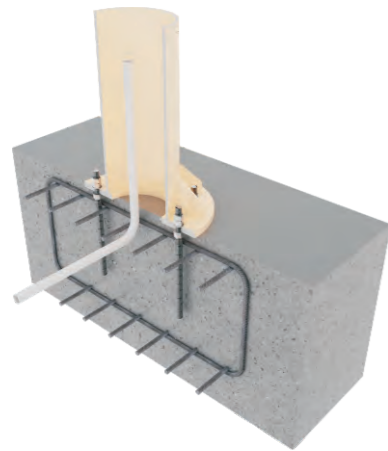
CCH-B
Chain Electric Hoist



CH-B
Wire Rope Electric Hoist



MOUNTINGS FOR COLUMN MOUNTED JIB CRANES

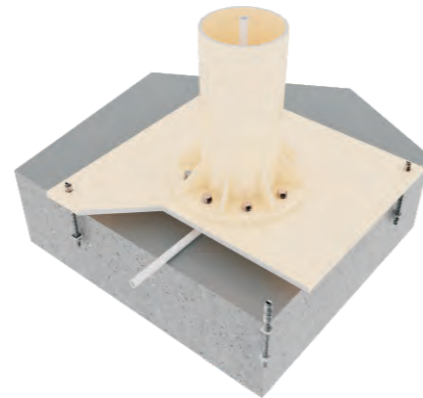


FOUNDATION BLOCK WITH ANCHOR BOLTS

The currently most regularly requested type of mounting for column mounted jib cranes uses anchor rods. These are positioned within a concrete foundation block. CLESCRANE delivers the anchors and a steel template for positioning and aligning the anchor box as well as the required information for pouring a foundation with reinforcement in accordance with DIN 1045-1.

INTERMEDIATE PLATE ON A CONCRETE FLOOR

Using a square intermediate plate, the crane can be mounted on a suitable existing concrete floor. After the floor plate has been drilled and chiselled out, anchors are inserted and cast. CLESCRANE delivers the intermediate plate and, on request, the appropriate floor anchors.



INTERMEDIATE PLATE ON A CONCRETE SUSPENDED CEILING

Alternatively, the intermediate plate can be mounted to a suitable concrete ceiling with through-wall anchors. CLESCRANE delivers the intermediate plate and, on request, the appropriate through-wall anchors.

INSTALLATION OF WALL MOUNTED JIB CRANES ADAPTED FLEXIBILITY



ON STEEL SUPPORTS USING WALL BRACKET/MOUNTING

The simplest type of mounting of wall jib cranes is the bolting onto existing steel supports. For this, the supports must be of structurally sufficient size (they may need to be reinforced) and exhibit a sufficiently wide connection surface. All Clescrane wall mounted jib cranes include this mounting option in the scope of delivery of standard equipment. For types CJX-B, CJX-A and CJX-AL this is provided through the wall bracket and for type CJX-D through direct bolting on of both wall mountings.



ON REINFORCED CONCRETE SUPPORTS USING BRACKETS

On structurally suitable, square or rectangular reinforced concrete supports which can be freely enveloped, wall Mounted jib cranes can be mounted with brackets. The required tension forces can be applied through threaded rods to hold the crane securely to the support at the desired height. The support must have the required minimum width for this. CLESCRANE delivers brackets designed for the support dimensions, together with the required mounting material.



ON REINFORCED CONCRETE WALLS OR SUPPORTS USING WELD-ON PLATES

Concrete walls or supports can be prepared for the mounting of wall mouned jib cranes on weld-on plates through suitable mounting plates with grouted anchoring as a substructure. When performing this construction work, care should be taken that the mounting plates lie exactly flush and exhibit plumb-vertical connection surfaces. The weld-on plates are welded to the substructure. The wall bracket or the wall mountings of the crane are bolted onto the weld-on plates. Clescrane delivers the weld-on plates with the required mounting screws.



ON REINFORCED WALLS USING WALL BRACKETS AND THROUGH-WALL ANCHORS

For mounting on reinforced concrete walls of adequate load-bearing capacity, wall brackets are used. For the types CJX-B, CJX-A and CJX-AL, the wall bracket is included in the scope of delivery. For the type CJX-D, it is available as optional equipment. The wall brackets are mounted on the wall with ties and counterplates. Included in the Clescrane scope of delivery are the anchor rods, counterplates and the required mounting materials, all adapted for the respective wall thicknessmaterial

SINGAPORE OIL DRILLING COMPANY

Singapore oil drilling company is the professional in the oil development, mining businesses. With the expansion of the company's scale, it is necessary to use the crane to transport the flammable petroleum in the port to improve the work efficiency.

Based on the rich experience and professional technology, Clescrane choose the jib crane with explosion-proof class EX-DIICT4 to meet the special requirements to lift the flammable oil materials. In March, 2017, Clescrane signed the contract with Singapore Oil Drilling Company about 4 sets of explosion-proof pillar mounted jib crane (EX-CJZ2t-7.5m H=6m, A3).

The Singapore oil drilling company is very satisfied with the products and services offered by Clescrane. Once again, they have purchased 4 cantilever crane products from Clescrane and sincerely hope to build a long-term cooperative relationship with Clescrane.





The oil industry has always been one of the main industries which Clescrane provide solution. We use the rich experience in this industry to provide professional solutions to make our customers satisfied. Regardless of the crane using process, we can always help customers improve their efficiency. Adhering to the business philosophy of "never sacrifice the future for a short-term interests", Clescrane got more and more orders in southeast Asia market recent years won more and more high praise and good reputation from customers. Clescrane will continue to provide customers most reliable, efficient and reasonable materials handling solutions and high quality products as usual.

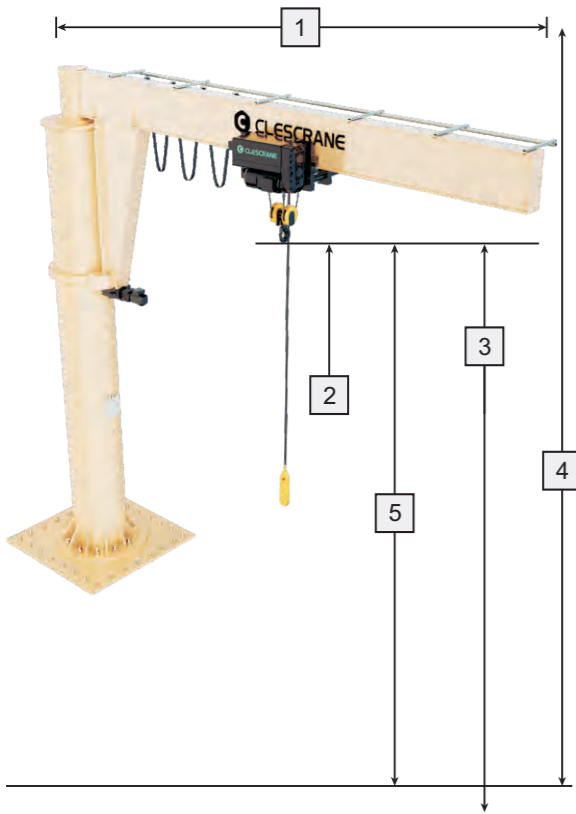
GERMANY PACKAGING TECHNOLOGY GROUP

Germany Packaging Technology Group was founded in 1975. As the leading manufacturer for packaging equipment for bulk products and pallet carrier and logistics system in the world, it headquartered in Krefeld City of lower Rhine River, Germany.

In September of 2014, agreement was reached between Germany Packaging Technology Group and Clescrane. 8 sets of CJZ jib cranes were supplied to a major paper making enterprise in China, which is a large-scale modern paper making enterprise integrating the pulp, paper, hot spot and environmental protection. The company has the world's advanced low quantity coated paper production line, bleached thermal mechanical pulp (BTMP) production line, waste paper deinking pulp (DIP) production line and an annual output of 350,000 tons of high-grade food packaging paper production line. 4 of the 8 sets were used in their factory in Nanchang and the other 4 in Zhanjiang.

HILTI chemical bolts were supplied for this project. After installation and test, Germany Packaging Technology Group and the Chinese paper making company are both satisfied with Clescrane products and service. As the expansion of Clescrane's business, more and more clients will choose us. We will always provide our safest and most reliable and efficient material handling solutions and high quality products for our clients from different industries.

| CJZ Series Column Mounted Jib Crane | | | | |
|-------------------------------------|---|---|--|---|
| Model (Optional) | CJZ-B | CJZ-A | CJZ-D | CJZ-AL |
| |  |  |  |  |
| Max Lifting capacity | To 2t | To 2t | To 5t | To1t |
| Max Arm Length | To 8m | To 8m | To 10m | To 8m |
| Rotation Type | Manual | Manual | Electric | Manual |
| Trolley movement (Optional) | Manual/Electric | Manual/Electric | Electric | Manual |
| Hoist (Optional) | Chain Hoist | Chain Hoist | Wire Rope Hoist/ Chain Hoist | Chain Hoist |
| Rated slewing range | 300° | 300° | 360° | 300° |



Basic Information

Company _____ Country _____
Name _____ Job Title _____
Email _____ Telephone _____
☐ Please call me back

Parameter Confirmation Table

☐ CJZ-B ☐ CJZ-A ☐ CJZ-D ☐ CJZ-AL

Column mounted jib crane data:

- ① Jib length _____ mm
② Capacity _____ kg
③ Hook stroke _____ mm
④ Clear building height _____ mm
⑤ Height above ground _____ mm





Type of mounting required: (please tick as appropriate)

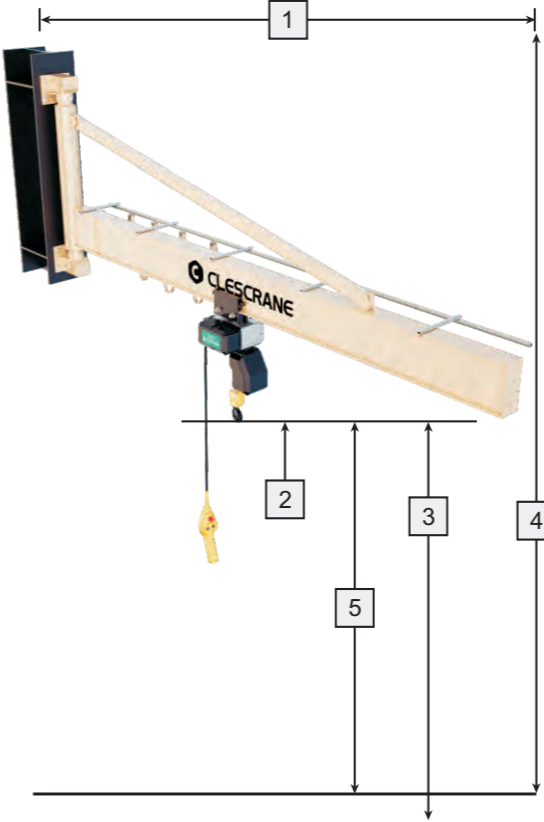
- ☐ on foundation with anchor bolts
☐ on reinforced concrete floor plate
☐ on reinforced concrete ceiling

Rotation Mode ☐ Manual(S) ☐ Electric(E)
Trolley Movement Mode ☐ Manual(P) ☐ Electric(M)
Hoist ☐ Wire Rope Hoist(H) ☐ Chain Hoist(C)

Others

Temperature _____ °C Humidity _____ Altitude _____ m

| CJX Series Wall Mouted Jib Crane | | | | |
|----------------------------------|---|---|---|---|
| Model (Optional) | CJX-B | CJX-A | CJX-D | CJX-AL |
| |  |  |  |  |
| Max Lifting capacity | To 2t | To 2t | To 3t | To1t |
| Max Arm Length | To 8m | To 8m | To 10m | To 9m |
| Rotation Type | Manual | Manual | Electric | Manual |
| Trolley movement (Optional) | Manual/Electric | Manual/Electric | Electric | Manual |
| Hoist (Optional) | Chain Hoist | Chain Hoist | Wire Rope Hoist/ Chain Hoist | Chain Hoist |
| Rated slewing range | 180° | 180° | 180° | 180° |



Basic Information

Company _____ Country _____
Name _____ Job Title _____
Email _____ Telephone _____
☐ Please call me back

Parameter Confirmation Table

☐ CJX-B ☐ CJX-A ☐ CJX-D ☐ CJX-AL

Column mounted jib crane data:

- ① Jib length _____ mm
② Capacity _____ kg
③ Hook stroke _____ mm
④ Clear building height _____ mm
⑤ Height above ground _____ mm

Type of mounting required: (please tick as appropriate)

- ☐ on foundation with anchor bolts
☐ on reinforced concrete floor plate
☐ on reinforced concrete ceiling

Rotation Mode ☐ Manual(S) ☐ Electric(E)
Trolley Movement Mode ☐ Manual(P) ☐ Electric(M)
Hoist ☐ Wire Rope Hoist(H) ☐ Chain Hoist(C)

Others

Temperature _____ °C Humidity _____ Altitude _____ m

NETWORK OF SERVICE PROVIDERS

CLESCRANE doesn't want the business to grow too fast. We want to be a slow company with responsibility. With the expansion of business, we will gradually cultivate more professional localization service partners.

- Central Africa · 1
- Angola · 2
- Mali · 2
- Ethiopia · 1
- Tanzania · 2
- Namibia · 2
- Niger · 1
- Kazakhstan · 2
- Kuwait · 2
- Qatar · 2
- The united Arab emirates · 1
- Nigeria · 2
- Ghana · 4
- Kenya · 1
- South Africa · 3
- Russia · 2
- Bangladesh · 2
- Pakistan · 2
- Thailand · 3
- Malaysia · 1
- Papua New Guinea · 1
- Australia · 2
- Britain · 4
- Poland · 2
- Austria · 2
- Croatia · 1
- Italy · 1
- Turkey · 2
- The United States · 2
- Mexico · 4
- Honduras · 1
- Salvador · 1
- Costa Rica · 3
- Panama · 1
- Puerto Rico · 1
- Venezuela · 1
- Colombia · 1
- Ecuador · 3
- Peru · 2
- Brazil · 1
- Bolivia · 1
- Paraguay · 1
- Uruguay · 1
- Argentina · 1
- Chile · 3

