

CH SERIES

WIRE ROPE ELECTRIC HOISTS

HOIST MASTER

- ✓ Latest technology
- ✓ Cost-effective
- ✓ Green and Eco-friendly

CLESCRANE

ABOUT US

If someone asks me what your core business is, I will say that automatic paper roll warehousing and biomass straw bale warehousing are our core competitiveness. We focus on familiar areas of expertise to help clients increase their productivity, enhance their businesses, and increase the value of their products. We have professional service partners in target markets around the world, which enables us to provide turnkey services and long term maintenance services for local customers.

Both quality and values are important when choosing business partners. We care about the health and development of every employee. We provide professional training, longer holidays and more company for family members. Employees are our greatest wealth, we believe that a company can develop in the long run, then he must love his employees, good corporate culture, shape our core values. "I won't sell the future for short term profit", CLESCRANE is here for you.



Brand image spokesperson
Evangelina



Compact structure, light self-weight, small wheel-pressure and high comprehensive cost performance

Leading technology and component performance ensure the optimal extreme dimension of the products and the height of equipment and the compact structure under the premise of ensuring the high efficiency. Within the same plant and working area, CH series wire rope electric hoists can cover larger working range, which increases the utilization of the internal area of the plant and decreases the dead zone. If the plant is designed in accordance with the parameters of series of products of Clescraane during the design stage, requirements for the lifting equipment can be greatly reduced for the height and bearing capacity of the plant, which reduces above 10% of plant investment for the customers and improves the efficiency of investment.



Precise positioning and efficient running can improve production efficiency

Standard lifting with double speed(optional frequency conversion) and frequency conversion control of trolley ensure efficient running of the crane and promotion of logistics efficiency in workshop, and ensure the implementation of the whole work plans of customers on schedule. By the application of frequency conversion technology, it can effectively reduce shaking of load in the process of handling, which makes the load positioning more quickly and accurately. Simultaneously, it significantly reduces the impact of starting and braking, thus the whole handling process becomes much more smooth and safe.



Save operating costs and green energy saving

European type cranes equipped with CH series electric hoists can significantly reduce self-weight of the girder and the complete machine, and decrease the total power of running, as well as can save over 30% of power per year on average compared with the plants those use the domestic traditional cranes. Meanwhile, the running noise is superior to the national standard of Clescraane CH series electric hoists, which creates a more quiet work space.



Selection of high quality of components with safety and reliability and durable in use

Components with high quality are the basis for excellent quality of products. Clescraane Company takes each component seriously from lifting motors to reducers, from reels to steel wire ropes, from safe and reliable electrical components to the best structure components. Because Clescraane Company believes that only each component of good performance and quality can ensure the performance and quality of the complete machine. Lifting trinity mechanism with compact structure and superior performance is developed and designed for CH series electric hoist. The reduction gear produces low noise and becomes durable in use by high precision grinding and hardening treatment of the gear surface. Electrical connection sustained rate is up to 60% of the lifting motor, which not only meets frequent use during the process of production, but improves the reliability of the product. The imported brake disc provides the breaking lifetime of more than one million times with excellent wear-resisting property.



Save operating costs and green energy saving

European type cranes equipped with CH series electric hoists can significantly reduce self-weight of the girder and the complete machine, and decrease the total power of running, as well as can save over 30% of power per year on average compared with the plants those use the domestic traditional cranes. Meanwhile, the running noise is superior to the national standard of Clescraane CH series electric hoists, which creates a more quiet work space.

Safe and reliable, running monitoring and simple and convenient maintenance

CLESSTAR-Cles patented technology product is provided with various functions such as monitoring, protection, which can ensure safe and reliable operation of the crane, and its running monitoring unit can make detailed records of running condition of electric hoist, running status of motor and safety working cycle, and provide warning in advance. All records can provide data for maintenance, and the root of the problem should be understood to be able to provide maintenance much more timely and efficiently.

Modular design and multiple options can meet various demands of customer

The concept of modular design has always been throughout the whole product design, which ensures the standard and interchangeability of parts, greatly reduces the maintenance costs of products. All products series of the Company is provided with complete inventory of spare parts, and professional service team ensures to provide after-sales service to solve the troubles of customers after purchasing the equipment in a timely manner.



CH-B

Series

Wire Rope Electric Hoist

Lifting capacity: 1 000Kg ~ 100 000Kg

Standard configuration of CH-B series wire rope electric hoists

- Double speed lifting motor with 1t ~32t standard
variable frequency lifting motor with 32t ~ 100t standard
- Lifting electromagnetic disc brake and maintenance-free design
- 380V/3Ph/50Hz supply voltage
- Control voltage 48V
- Lifting limit switch
- Variable frequency motor of trolley with the speed of 5~20m/min
- Protection grade of electric motor is Grade IP55, and insulation grade is Grade F
- Lifting hook group with safety clasp
- Load lifting limiter
- Environment temperature: -20℃~+40℃

Product Advantages

- Accumulation and Innovation
- Compact Structure, Excellent Performance
- Efficient Transmission and Power Source
- Excellent Performance, Safe and Reliable



CH-B

Electric cabinet

- Rational design, convenient maintenance, decreasing running cost. Professional and high quality of electrical components, safe and reliable.
- Multiple safety protection devices to ensure equipment safe.
- Protection grade IP55.
- Clear identification to easy for trouble removal.

Trolley drive unit

- Rinty of high-performance motor, reduction gearbox and brake.
- Compact structure, excellent performance.
- Low energy consumption, low noise and eco-friendly design.
- Variable frequency control, smooth running, low impact and meeting requirements of a variety of speed.
- Asbestos-free brake disc and its normal service life can be up to one million times.
- No-wear design, maintenance-free, long service life.

Lifting height limiter

- Freely adjustable screw lifting height limiter with high precision, wide adjustment range, safe and reliable.
- Multiple-contact configurations can effectively achieve the function of transition with low and high speed and the stop during the rise and fall.

Lifting hook group

- DIN standard of lifting hook with safety clasp and wire rope sheath Ergonomic design.
- Forged by the high-strength material of T grade.
- Accompanied with nondestructive test certification of lifting hook randomly.

Wire rope with high-performance

- The imported wire rope of high-performance with tensile strength up to 2160MPa.
- The surface with galvanized processing for corrosion prevention effectively.
- With good flexibility to ensure wear resistance of the wire rope and prolong its service life.

Rope guide

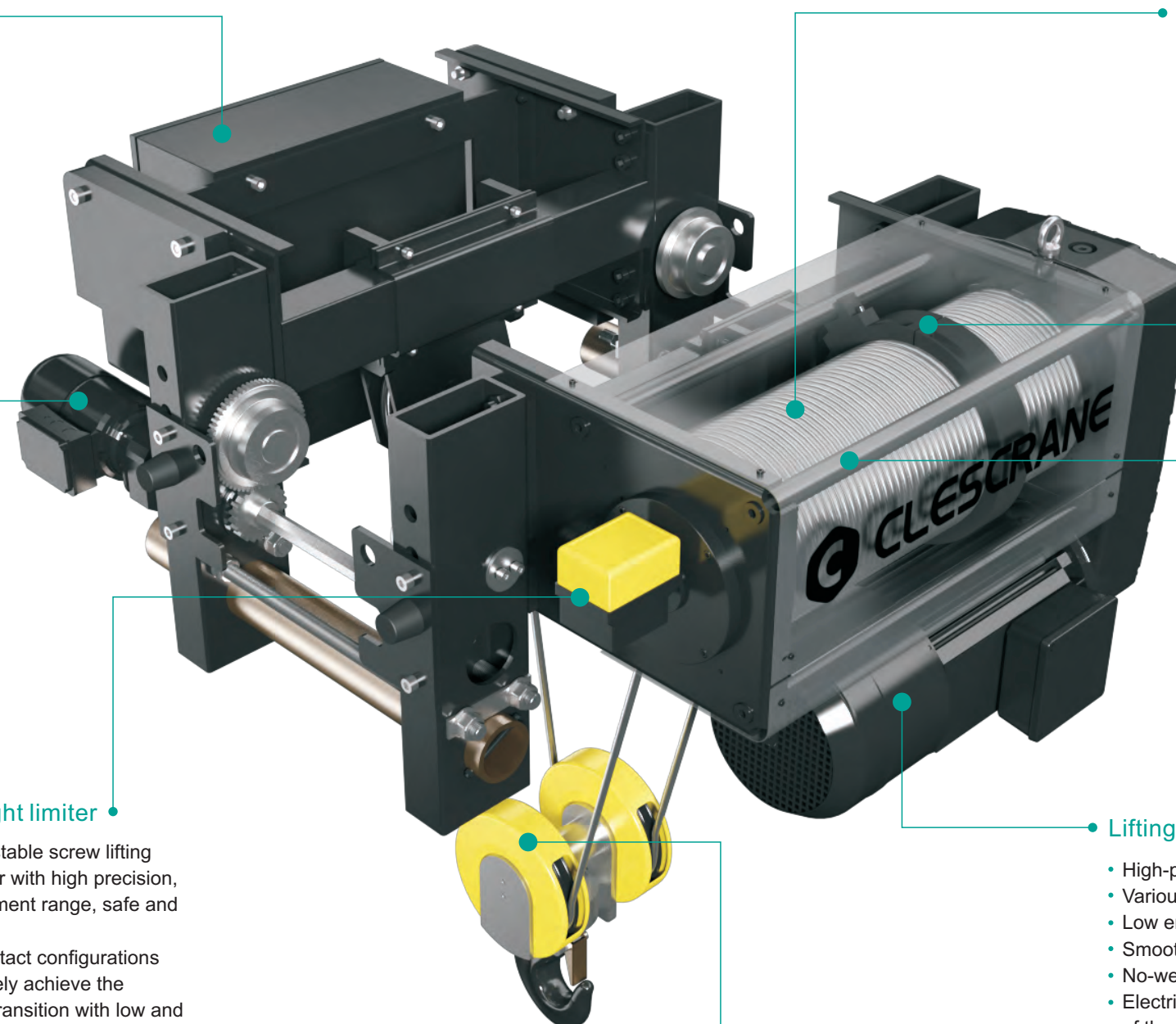
- Lifting weight, good wear resistance, to reduce the wear of wire rope effectively.
- Prevent wire rope from skipping and losing to off-groove, and safety first.

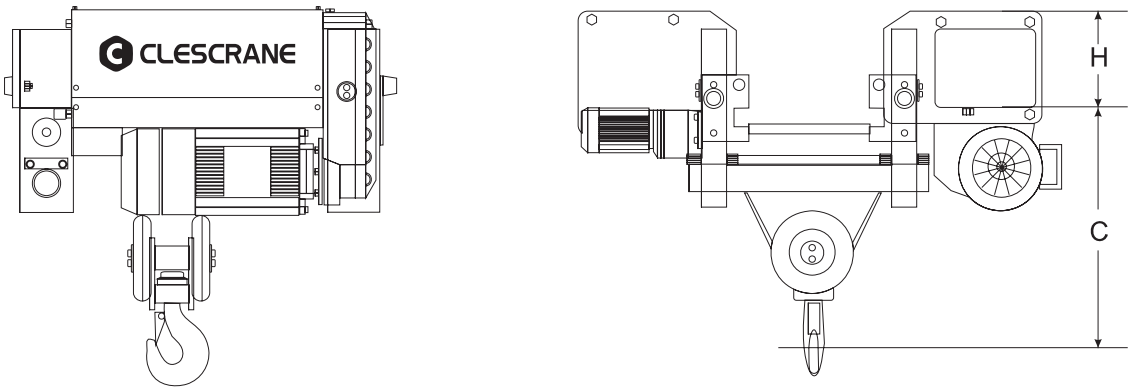
Drum

- Use the Q345-type seamless steel tube as raw material and process it by numbers of working procedure.
- Advanced processing methods to ensure concentricity of the drum.
- The depth of rope groove is in compliance with the FEM standard.
- High-strength pressing plates and bolts are fastened on the end of the wire rope to ensure the safety of lifting.

Lifting drive unit

- High-performance, large driving force and compact structure.
- Various components are running efficiently to ensure high efficiency.
- Low energy consumption, low noise and eco-friendly design.
- Smooth running, low impact, safe and reliable.
- No-wear design, long service life.
- Electrical connection sustained rate is up to 60% to meet the demands of the high frequency lifting.
- Service life Asbestos-free brake can be up to one million times.
- High protection grade of brake can meet the requirements of severe environment.

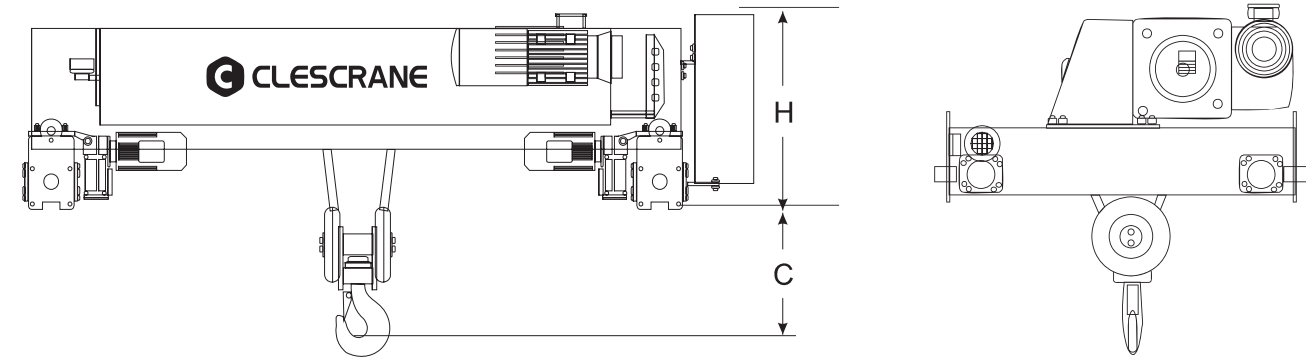




Selection table of CH-B series single girder wire rope hoist

Load Capacity (Kg)	FEM	ISO	Height (m)	Speed (m/min)	Trolley Speed (m/min)	H Size (mm)	C Size (mm)
1250	3m	M6	6/9/12/18	0.8/5.0	5~20	245	385
1600	3m	M6	6/9/12/18	0.8/5.0	5~20	245	385
2000	2m	M5	6/9/12/18	0.8/5.0	5~20	245	385
2000	3m	M6	6/9/12/18	1.3/8.0	5~20	245	385
2500	3m	M6	6/9/12/18	0.8/5.0	5~20	245	385
2500	3m	M6	6/9/12/18	1.0/6.3	5~20	245	385
2500	2m	M5	6/9/12/18	1.3/8.0	5~20	245	385
3200	2m	M5	6/9/12/18	0.8/5.0	5~20	245	385
3200	2m	M5	6/9/12/18	1.0/6.3	5~20	245	385
5000	2m	M5	6/9/12/18	0.8/5.0	5~20	266	495
5000	2m	M5	6/9/12/18	1.6/10	5~20	296	792
5000	3m	M6	6/9/12/18	1.3/8.0	5~20	296	792
6300	1Am	M4	6/9/12/18	0.8/5.0	5~20	266	495
6300	1Am	M4	6/9/12/18	1.3/8.0	5~20	266	495
6300	2m	M5	6/9/12/18	1.3/8.0	5~20	266	495
6300	3m	M6	6/9/12/18	1.0/6.3	5~20	266	495
8000	1Am	M4	6/9/12/18	1.3/8.0	5~20	296	792
8000	3m	M6	6/9/12/18	0.8/5.0	5~20	296	792
10000	1Am	M4	6/9/12/18	1.0/6.3	5~20	296	792
10000	2m	M5	6/9/12/18	0.8/5.0	5~20	296	792
10000	3m	M6	6/9/12/18	0.66/4.0	5~20	296	792
12500	1Am	M4	6/9/12/18	0.8/5.0	5~20	296	792
12500	2m	M5	6/9/12/18	0.6/4.0	5~20	296	792
12500	2m	M5	6/9/12/18	0.6/4.0	5~20	296	792

For more options, please contact Clescrane .



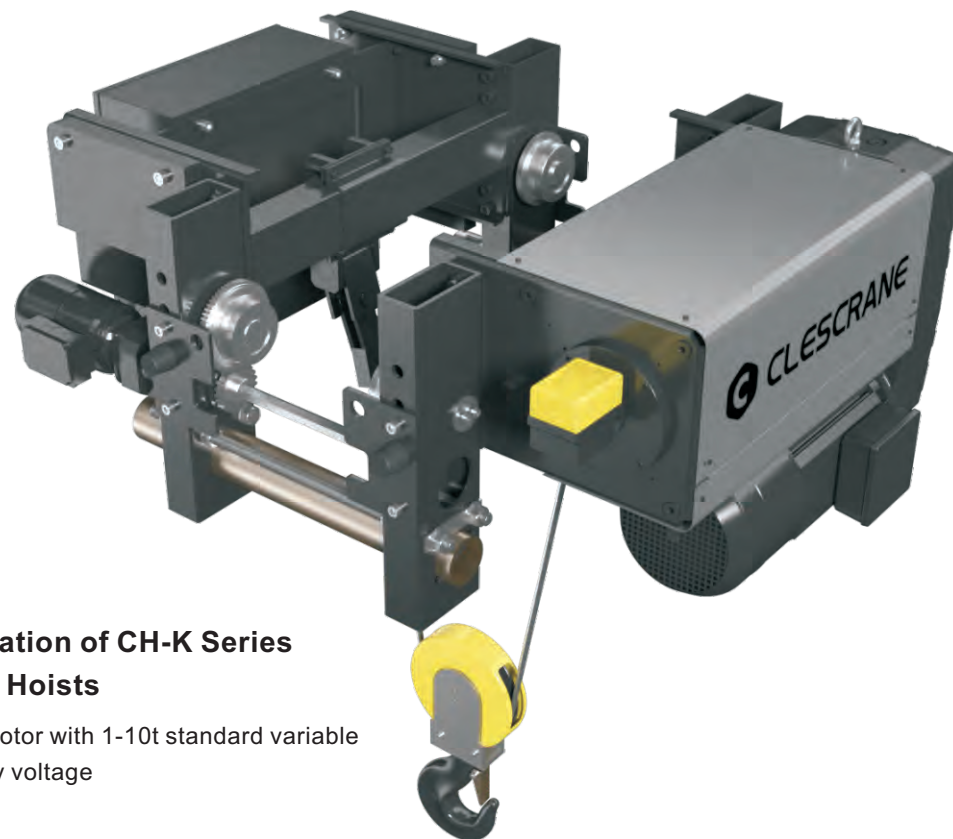
Selection table of CH-B series double girder wire rope hoist

Load Capacity (Kg)	FEM	ISO	Height (m)	Speed (m/min)	Trolley Speed (m/min)	H Size (mm)	C Size (mm)
2000	2m	M5	6/9/12/18	0.8/5.0	5~20	230	350
3200	2m	M5	6/9/12/18	0.8/5.0	5~20	230	350
5000	2m	M5	6/9/12/18	0.8/5.0	5~20	230	350
5000	2m	M5	6/9/12/18	0.8/5.0	5~20	230	350
8000	3m	M6	6/9/12/18	0.8/5.0	5~20	540	360
10000	1Am	M4	6/9/12/18	1.0/6.3	5~20	540	360
10000	2m	M5	6/9/12/18	0.8/5.0	5~20	540	360
10000	3m	M6	6/9/12/18	0.66/4.0	5~20	540	360
12500	1Am	M4	6/9/12/18	0.8/5.0	5~20	540	420
12500	1Am	M4	6/9/12/18	1.0/6.3	5~20	540	420
12500	2m	M5	6/9/12/18	0.6/4.0	5~20	540	420
16000	2m	M5	6/9/12/18	0.66/4.0	5~20	640	480
20000	1Am	M4	6/9/12/18	0.66/4.0	5~20	640	480
20000	2m	M5	6/9/12/18	0.53/3.4	5~20	640	480
20000	3m	M6	6/9/12/18	0.8/3.3	5~20	790	620
25000	1Am	M4	6/9/12/18	1.0/4.2	5~20	790	620
25000	2m	M5	6/9/12/18	0.8/3.3	5~20	790	620
25000	2m	M5	6/9/12/18	0~4.9	5~20	790	620
32000	2m	M5	6/9/12/18	0~4.9	5~20	790	620
32000	2m	M5	6/9/12/18	0~3.2	5~20	895	980
40000	1Am	M4	6/9/12/18	0~4.0	5~20	895	980
50000	2m	M5	6/9/12/18	0~3.2	5~20	895	980
50000	1Am	M4	6/9/12/18	0~4.0	5~20	895	980
63000	1Am	M4	6/9/12/18	0~3.2	5~20	975	1100
63000	2m	M5	6/9/12/18	0~2.4	5~20	975	1100
80000	1Bm	M3	6/9/12/18	0~3.8	5~20	1025	1525
100000	1Bm	M3	6/9/12/18	0~2.1	5~20	1025	1525

For more options, please contact Clescrane .

CH-K Series Wire Rope Electric Hoist

Lifting capacity: 1 000Kg ~ 10 000Kg



Standard Configuration of CH-K Series Wire Rope Electric Hoists

- Double-speed lifting motor with 1-10t standard variable
- 380V/3Ph/50Hz supply voltage
- Control voltage 48V
- Lifting limit switch
- Protection grade of electric motor is Grade IP55 and insulation grade is Grade F
- Lifting hook group with safety clasp
- Load lifting limiter
- Environment temperature: -20℃~+40℃

Are you still busy with calculating your ROI?

The CH-K series electric hoist with a new lifting three-in-one drive, more robust product, under the same load, than 1/4 times the price of similar products more cost-effective, more competitive in market.

You still feel that handling speed is not fast enough?

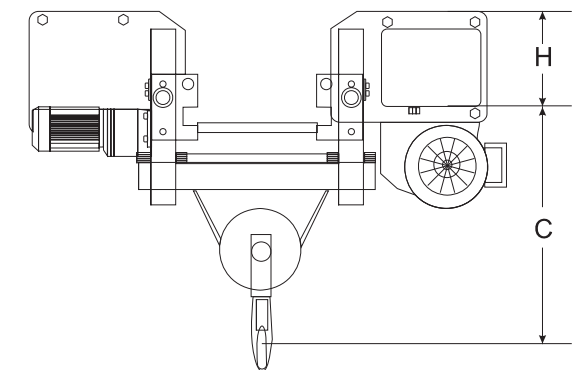
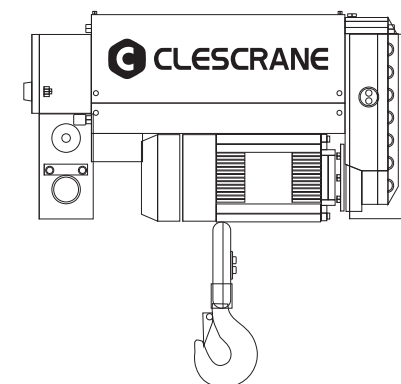
The CH-K series of electric hoist innovative design, in the same model, not only can enhance the product lifting height at the same time, but also effectively enhance the product lifting speed, continue to enhance customer material handling efficiency.

You still worried about the goods at the corner can not be moved?

The CH-K wire rope electric hoist to cover a greater range of operations, increasing the utilization of the plant area, reducing the blind spot. If the design stage of the plant design parameters based on this product can reduce the requirements on the plant height and bearing capacity for customers to reduce plant investment.

Are you concerned about the impact of downtime on production?

The CH-K wire rope electric hoist can effectively reduce the product in the work of the rope and hook damage to customers to reduce post-maintenance costs and extend product life, creating value for customers.



CH-K

Electric cabinet

- Rational design, convenient maintenance, decreasing running cost.
- Professional and high quality of electrical components, safe and reliable.
- Multiple safety protection devices to ensure equipment safe.
- Protection grade IP55.
- Clear identification to easy for trouble removal.

Trolley drive unit

- Trinity of high-performance motor, reduction gearbox and brake.
- Compact structure, excellent performance.
- Low energy consumption, low noise and eco-friendly design.
- Variable frequency control, smooth running, low impact and meeting requirements of a variety of speed.
- Asbestos-free brake disc and its normal service life can be up to one million times.
- No-wear design, maintenance-free, long service life.

Lifting height limiter

- Freely adjustable screw lifting height limiter with high precision, wide adjustment range, safe and reliable.
- Multiple-contact configurations can effectively achieve the function of transition with low and high speed and the stop during the rise and fall.

Lifting hook group

- DIN standard of lifting hook with safety clasp and wire rope sheath Ergonomic design.
- Forged by the high-strength material of T grade.
- Accompanied with nondestructive test certification of lifting hook randomly.

Wire rope with high-performance

- The imported wire rope of high-performance with tensile strength up to 2160MPa.
- The surface with galvanized processing.
- With good flexibility to ensure wear resistance of the wire rope and prolong its service life.

Rope guide

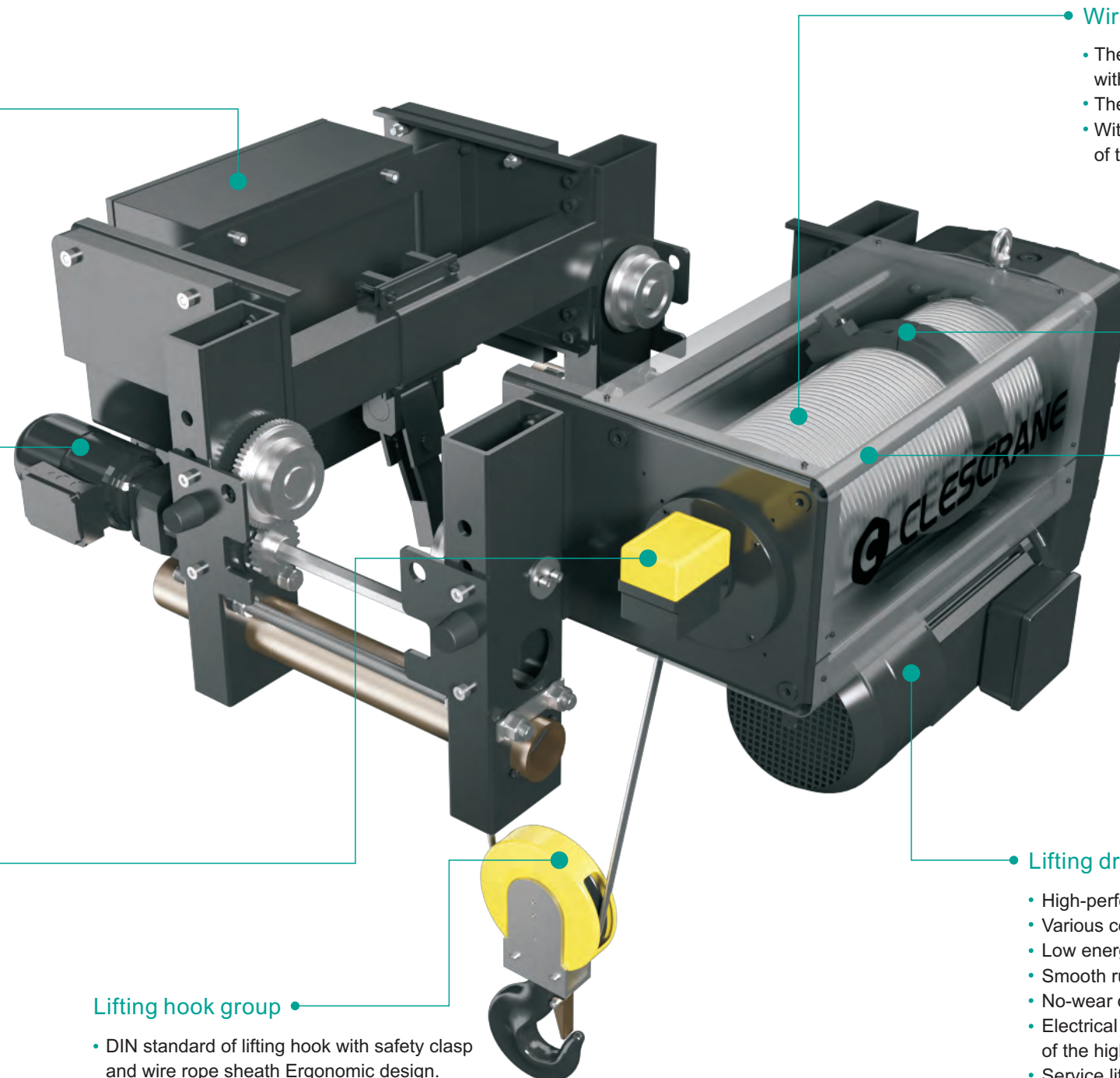
- Made by engineering plastics (one-time casting molding)
- Products light weight, good wear resistance, and add lubricating materials, effectively reduce the wear and tear of wire rope.

Drum

- Use the Q345-type seamless steel tube as raw material and process it by numbers of working procedure.
- Advanced processing methods to ensure concentricity of the drum.
- The depth of rope groove is in compliance with the FEM standard.
- High-strength pressing plates and bolts are fastened on the end of the wire rope to ensure the safety of lifting.

Lifting drive unit

- High-performance, large driving force and compact structure.
- Various components are running efficiently to ensure high efficiency.
- Low energy consumption, low noise and eco-friendly design.
- Smooth running, low impact, safe and reliable.
- No-wear design, long service life.
- Electrical connection sustained rate is up to 60% to meet the demands of the high frequency lifting.
- Service life Asbestos-free brake can be up to one million times.
- High protection grade of brake can meet the requirements of severe environment.



CH-P Series Wire Rope Electric Hoist

Lifting capacity: 1 000Kg ~ 20 000Kg

Standard Configuration of CH-P Series Wire Rope Electric Hoists

- Double-speed lifting motor with 1-20t standard variable
- 380V/3Ph/50Hz supply voltage
- Control voltage 48V
- Lifting limit switch
- Protection grade of electric motor is Grade IP55 and insulation grade is Grade F
- Lifting hook group with safety clasp
- Load lifting limiter
- Environment temperature: -20°C~+40°C



Innovations of the cross trolley traveling mechanism:

Adopts dual-drive three-in-one drive. The three-in-one drive is connected directly to the active wheel, eliminating the drive gear wheel and connecting rod structure. For some countries which is in the conduct of Australia standard for crane, the wheel section need add the requirement of safety cover. This improvement will be good for promotion of our business in the region.

Range of application

Machine processing, steel production, material supply or any other lifting and handling occasions.

CH-P

Electric cabinet

- Rational design, convenient maintenance, decreasing running cost.
- Professional and high quality of electrical components, safe and reliable.
- Multiple safety protection devices to ensure equipment safe.
- Protection grade IP55.
- Clear identification to easy for trouble removal.

Trolley drive unit

- Trinity of high-performance motor, reduction gearbox and brake.
- Compact structure, excellent performance.
- Low energy consumption, low noise and eco-friendly design.
- Variable frequency control, smooth running, low impact and meeting requirements of a variety of speed.
- Asbestos-free brake disc and its normal service life can be up to one million times.
- No-wear design, maintenance-free, long service life.

Lifting height limiter

- Freely adjustable screw lifting height limiter with high precision, wide adjustment range, safe and reliable.
- Multiple-contact configurations can effectively achieve the function of transition with low and high speed and the stop during the rise and fall.

Lifting hook group

- DIN standard of lifting hook with safety clasp and wire rope sheath Ergonomic design.
- Forged by the high-strength material of T grade.
- Accompanied with nondestructive test certification of lifting hook randomly.

Wire rope with high-performance

- The imported wire rope of high-performance with tensile strength up to 2160MPa.
- The surface with galvanized processing for corrosion prevention effectively.
- With good flexibility to ensure wear resistance of the wire rope and prolong its service life.

Rope guide

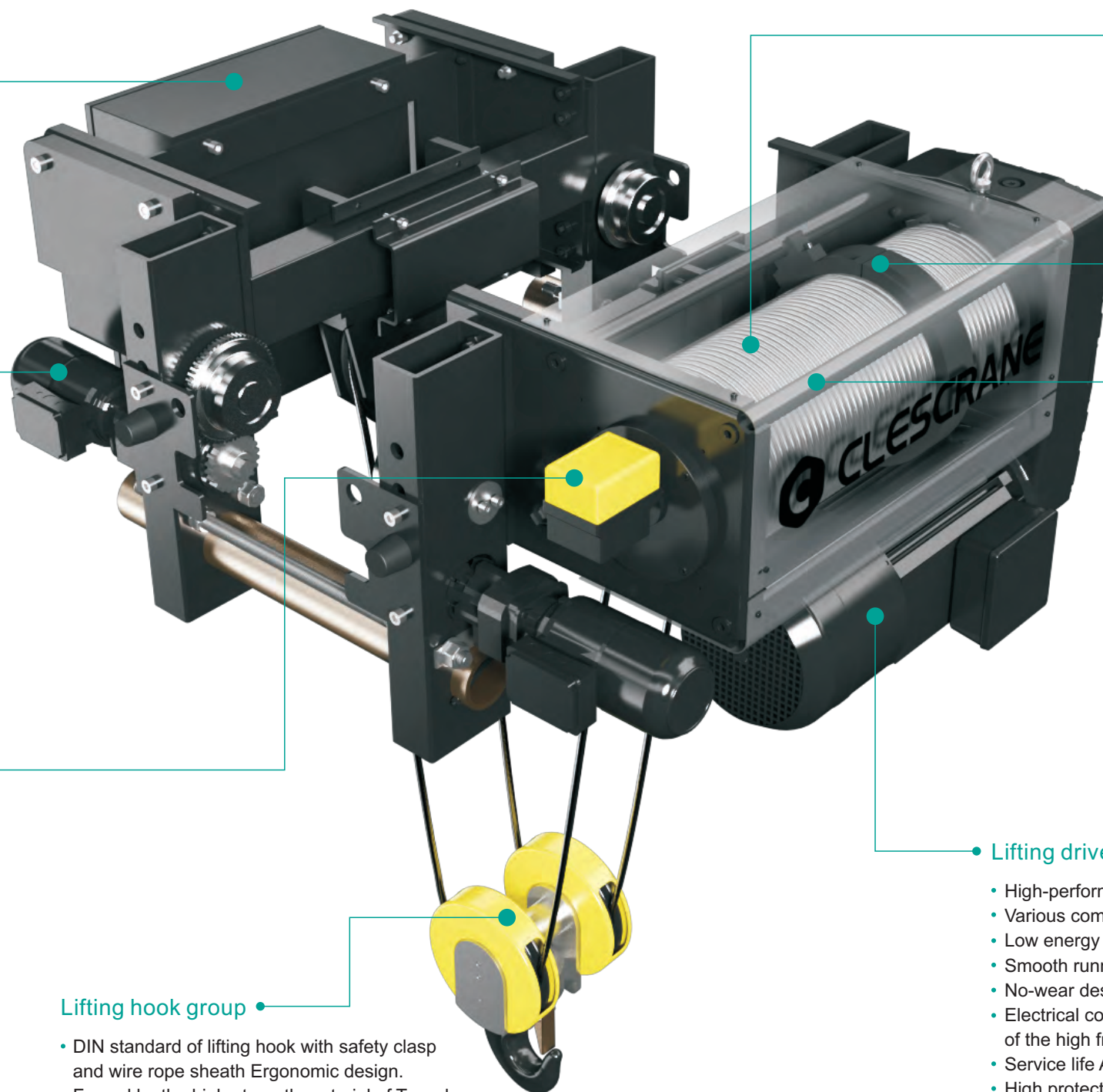
- Lifting weight, good wear resistance, to reduce the wear of wire rope effectively.
- Prevent wire rope from skipping and loosing to off-groove, and safety first.

Drum

- Use the Q345-type seamless steel tube as raw material and process it by numbers of working procedure.
- Advanced processing methods to ensure concentricity of the drum.
- The depth of rope groove is in compliance with the FEM standard.
- High-strength pressing plates and bolts are fastened on the end of the wire rope to ensure the safety of lifting.

Lifting drive unit

- High-performance, large driving force and compact structure.
- Various components are running efficiently to ensure high efficiency.
- Low energy consumption, low noise and eco-friendly design.
- Smooth running, low impact, safe and reliable.
- No-wear design, long service life.
- Electrical connection sustained rate is up to 60% to meet the demands of the high frequency lifting.
- Service life Asbestos-free brake can be up to one million times.
- High protection grade of brake can meet the requirements of severe environment.



CH-R

Series

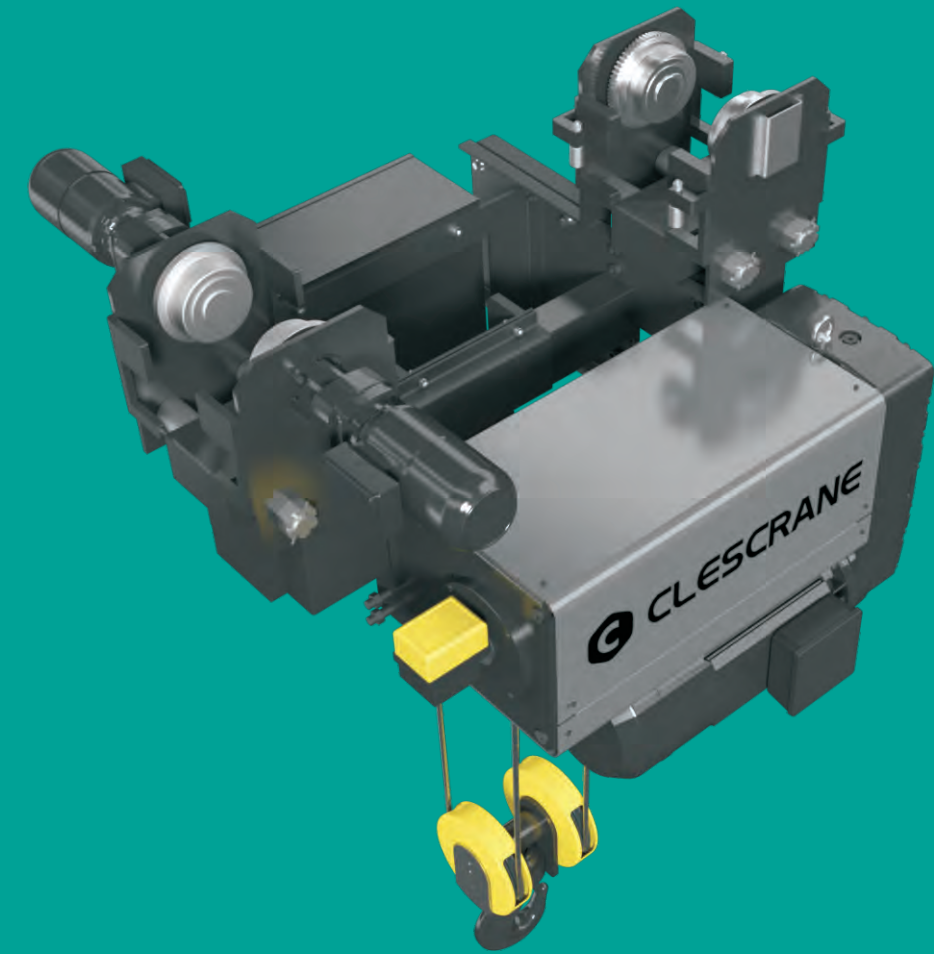
Wire Rope

Electric Hoist

Lifting capacity: 1 000Kg ~ 32 000Kg

Standard Configuration of CH-R Series Wire Rope Electric Hoists

- Double-speed lifting motor with 1-32t standard variable
- 380V/3Ph/50Hz supply voltage
- Control voltage 48V
- Lifting limit switch
- Protection grade of electric motor is Grade IP55 and insulation grade is Grade F
- Lifting hook group with safety clasp
- Load lifting limiter
- Environment temperature: -20°C~+40°C



This series hoist suits for I beam.

CH-R

Electric cabinet

- Rational design, convenient maintenance, decreasing running cost.
- Professional and high quality of electrical components, safe and reliable.
- Multiple safety protection devices to ensure equipment safe.
- Protection grade IP55.
- Clear identification to easy for trouble removal.

Trolley drive unit

- Trinity of high-performance motor, reduction gearbox and brake.
- Compact structure, excellent performance.
- Low energy consumption, low noise and eco-friendly design.
- Variable frequency control, smooth running, low impact and meeting requirements of a variety of speed.
- Asbestos-free brake disc and its normal service life can be up to one million times.
- No-wear design, maintenance-free, long service life.

Lifting height limiter

- Freely adjustable screw lifting height limiter with high precision, wide adjustment range, safe and reliable.
- Multiple-contact configurations can effectively achieve the function of transition with low and high speed and the stop during the rise and fall.

Lifting hook group

- DIN standard of lifting hook with safety clasp and wire rope sheath Ergonomic design.
- Forged by the high-strength material of T grade.
- Accompanied with nondestructive test certification of lifting hook randomly.

Wire rope with high-performance

- The imported wire rope of high-performance with tensile strength up to 2160MPa.
- The surface with galvanized processing for corrosion prevention effectively.
- With good flexibility to ensure wear resistance of the wire rope and prolong its service life.

Rope guide

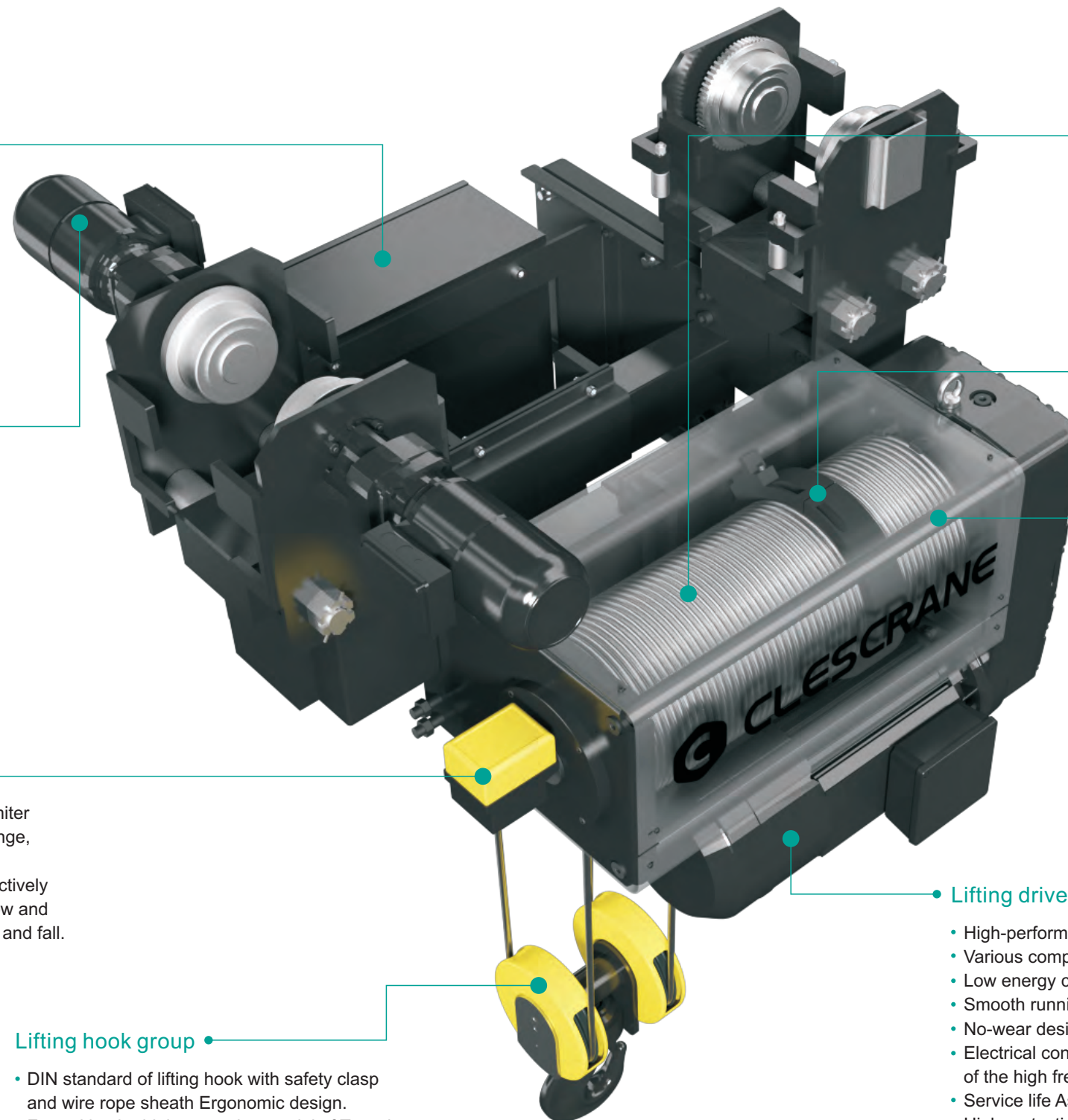
- Lifting weight, good wear resistance, to reduce the wear of wire rope effectively.
- Prevent wire rope from skipping and losing to off-groove, and safety first.

Drum

- Use the Q345-type seamless steel tube as raw material and process it by numbers of working procedure.
- Advanced processing methods to ensure concentricity of the drum.
- The depth of rope groove is in compliance with the FEM standard.
- High-strength pressing plates and bolts are fastened on the end of the wire rope to ensure the safety of lifting.

Lifting drive unit

- High-performance, large driving force and compact structure.
- Various components are running efficiently to ensure high efficiency.
- Low energy consumption, low noise and eco-friendly design.
- Smooth running, low impact, safe and reliable.
- No-wear design, long service life.
- Electrical connection sustained rate is up to 60% to meet the demands of the high frequency lifting.
- Service life Asbestos-free brake can be up to one million times.
- High protection grade of brake can meet the requirements of severe environment.



CLESCRANE

Clescrane CH series wire rope electric hoist products are provided with complete series and have its wide application, to provide customers with comprehensive industrial crane equipment and various types of lifting mechanism.

APPLICATIONS

Perfect fit, various applications

Clescrane pays close attention to customers' demands, and the CH wire rope electric hoist we designed which can be upgraded to CHEX explosion-proofing electric rope hoist series. Our products are widely used in many different fields, such as the food industry, chemical industry, petroleum, natural gas and any other occasions that put safety production in the first place.

NETWORK OF SERVICE PROVIDERS

CLESCRANE doesn't want the business to grow too fast. We want to be a slow company with responsibility. With the expansion of business, we will gradually cultivate more professional localization service partners.

- Central Africa * 1
- Angola * 2
- Mali * 2
- Ethiopia * 1
- Tanzania * 2
- Namibia * 2
- Niger * 1
- Kazakhstan * 2
- Kuwait * 2
- Qatar * 2
- The united Arab emirates * 1
- Nigeria * 2
- Ghana * 4
- Kenya * 1
- South Africa * 3
- Russia * 2
- Bangladesh * 2
- Pakistan * 2
- Thailand * 3
- Malaysia * 1
- Papua New Guinea * 1
- Australia * 2
- Britain * 4
- Poland * 2
- Austria * 2
- Croatia * 1
- Italy * 1
- Turkey * 2
- The United States * 2
- Mexico * 4
- Honduras * 1
- Salvador * 1
- Costa Rica * 3
- Panama * 1
- Puerto Rico * 1
- Venezuela * 1
- Colombia * 1
- Ecuador * 3
- Peru * 2
- Brazil * 1
- Bolivia * 1
- Paraguay * 1
- Uruguay * 1
- Argentina * 1
- Chile * 3
-



CH SERIES WIRE ROPE HOIST CUSTOMIZED FUNCTION



- 1 The hoist wheel width can be adjusted according to the beam width>550mm,<690mm (for Single Girder Crane)
- 2 Adjustment of double girder gauge (1400mm-1700mm-2000mm-2400mm-2700mm-3100mm-3400mm-3800mm)
(for Double Girder Crane)
- 3 The standard headroom hoist can be replaced with a turnable trolley
- 4 Single beam type CH hoist can be equipped with first and second travel limit
- 5 Monitoring unit (standard)
- 6 After installing the load on the large screen, the font size is500×230&900×230
- 7 Selection of special voltages
- 8 Heating and dehumidifying function of motor and electric box
- 9 Replacement of hoist electric box with stainless steel electric control box
- 10 Hoist reel cover replaced with stainless steel
- 11 Add installed rain cover
- 12 Raise the hook number by one gear
- 13 Hook becomes electric swivel type
- 14 Hook 90° rotation loc

- 15 The hook head is replaced with a W hook
- 16 The hook head is replaced with a stainless steel hook head
- 17 Install the second lifting limit (mechanical weight limit)
- 18 Install the second brake for lifting (electromagnetic disc brake)
- 19 The hoisting mechanism realizes frequency conversion control
- 20 Add anti-sway function
- 21 Add inching function
- 22 The internal bearing of the reducer is replaced with SKF&NSK bearing (standard equipped Chinese famous brand)
- 23 Adjustment of control voltage
- 24 The hoist of the monorail type, that is, the hoist needs to be equipped with a transformer if it is used alone.

Advanced Product Solution

Constant Innovation Based on the Demand of Customers



CLESCRANE retains the rights to change on product design and specs. at any time. When purchase and delivery, subject to our actual products.

HENAN CLESCRANE SYSTEM CO.,LTD.

Room 902, Building 6,
No. 26 Dongqing Street,
Zhengzhou, Henan,
P.R.China; P.C.: 450000

Tel +86-371-5532 8269

Email inquiry@clescrane.com

www.clescrane.com

