

More products



CH-B low headroom
single girder hoist
Max. Load: 1~20t



CHS single girder
overhead crane
Max. Load: 1~20t



CH-B double girder
trolley
Max. Load: 1~100t



CHD double girder
overhead crane
Max. Load: 1~100t



CHD DOUBLE GIRDER OVERHEAD CRANE

Max. Load: 100 Ton



CLESCRANE SYSTEM CO.,LTD.
Room 902, Building 6,
No. 26 Dongqing Street, Zhengzhou,
Henan, P.R.China; P.C.: 450000
Tel: +86-371-5532 8269 Ext.1039
Email: inquiry@clescrane.com
www.clescrane.com





CHD Double Girder Overhead Crane

Clescrae CHD series double girder overhead cranes offer exceptional load capacity for a low deadweight. Powerful and agile, with a capacity of up to 100 tons, it is particularly good for general manufacturing, workshops, and assembly lines. The load hook can be raised between the two crane girders, which allows large lifting heights to be achieved.

This series of products is matched with CH series wire rope electric hoists

- Design is based on FEM1.001 and CMAA70 standards.
- Low deadweight reduces investment layout – crane girders made of computer-optimised box sections.
- Crane girders can be adapted to building structure requirements.
- Optimum utilisation of the available height and space thanks to compact travelling hoist design (minimum approach dimensions and large hook path).
- End carriages of torsionally rigid, welded box-section design.
- Modular design of end carriages and wheel sets. Wheel group with adjustable structure, to prevent the rail from gnawing.
- Overload limiter, height limiter, Stroke limiter, photoelectric limiter and other security measures are equipped according to different working conditions, crane black box with recorded analysis functions can be added based on the customer requirements.
- Crane control to meet application requirements: via radio control, control pendant or cab control (optional).
- Maintenance platform and accessible crab facilitate maintenance of building interior fittings (optional).
- Lifting capacity: 1~100 t, non-standard customized crane can be produced.



CHD Double Girder Overhead Crane

Crane type	CHD
Profile-section girder	Box type
Max. load capacity* [t]	100
Max. span* [m]	35.5
Long travel speed [m/min]	3.2-32
Cross-travel speed [m/min]	5-20
Lifting speed [m/min]	0.8/5
Hoist unit	CH wire rope hoist

1

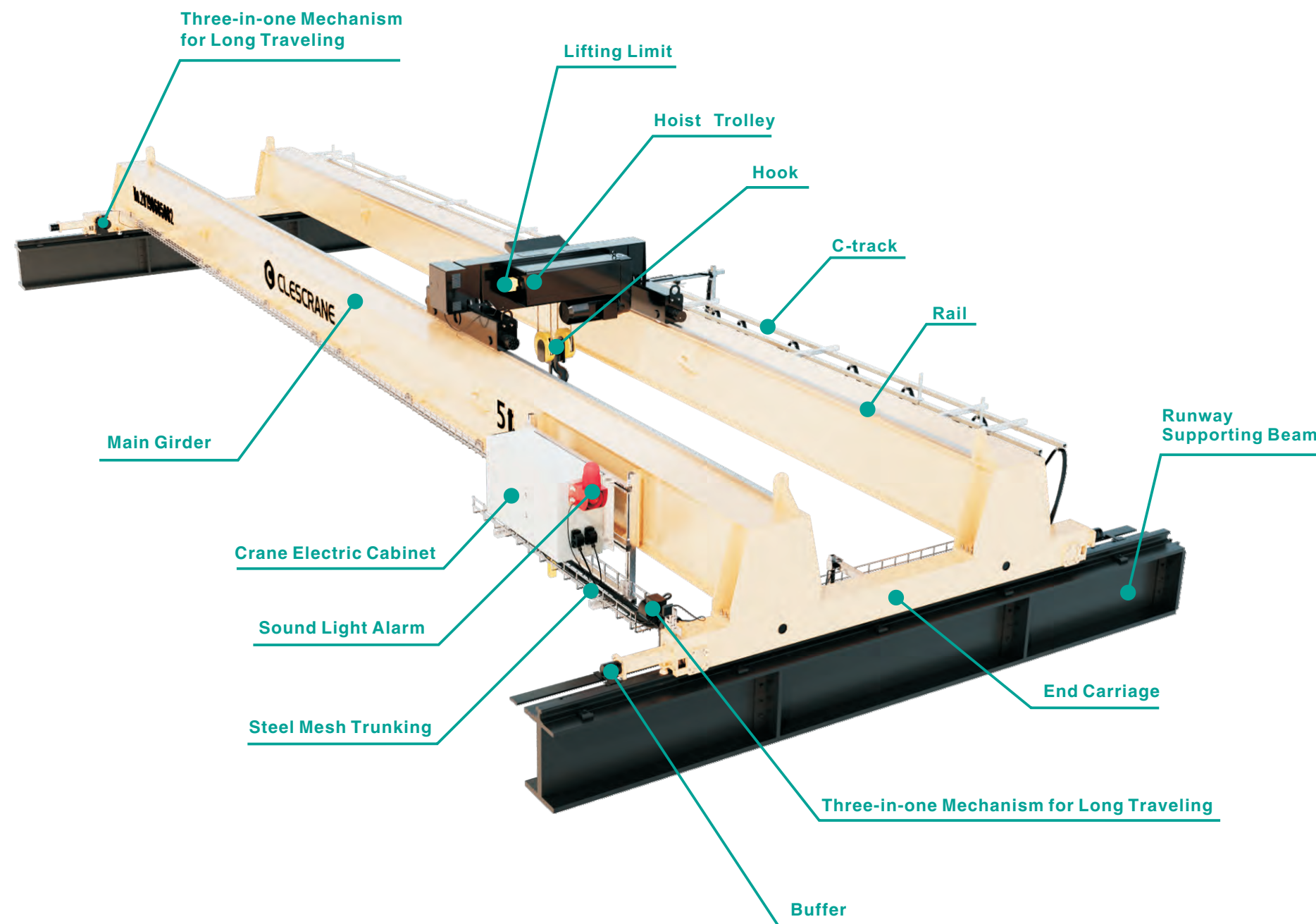
2

3

4

5

CHD Double Girder Overhead Crane



Controls to meet your needs

- ☐ Pendant control
- ☐ Push-button type remote control transmitter
- ☐ Joystick remote control transmitter

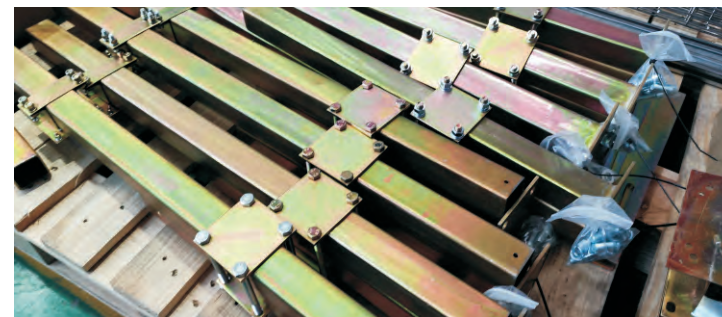


Clescane Optionals:

- | | |
|----------------------------------------------------------------------------------------|---------------------------------------------------|
| <input type="checkbox"/> Aseismic floodlight | <input type="checkbox"/> Wireless remote control |
| <input type="checkbox"/> Second lifting limit | <input type="checkbox"/> Lifting frequency |
| <input type="checkbox"/> End stop for hook | <input type="checkbox"/> Rain cover for trolley |
| <input type="checkbox"/> Electric rotating hook | <input type="checkbox"/> Inch |
| <input type="checkbox"/> End stop for long travel | <input type="checkbox"/> Stainless steel hook |
| <input type="checkbox"/> Maintenance crane cage | <input type="checkbox"/> Second brake for lift |
| <input type="checkbox"/> Brush sweep rail | <input type="checkbox"/> Heating dehumidification |
| <input type="checkbox"/> Vertical lifting | <input type="checkbox"/> Non-standard hook |
| <input type="checkbox"/> W Hook | <input type="checkbox"/> Anti-sway |
| <input type="checkbox"/> Improve one grade of the hook number | |
| <input type="checkbox"/> Stainless steel shell for cable drum | |
| <input type="checkbox"/> Stainless steel electric control box | |
| <input type="checkbox"/> Horizontal guide sheave(If the span is over 35m,we recommend) | |
| <input type="checkbox"/> Increase the display of the load(standard font size 500x230) | |
| <input type="checkbox"/> Increase the display of the load(standard font size 900x230) | |
| <input type="checkbox"/> The reducer bearing brand is changed to SKF or NSK | |
| <input type="checkbox"/> Only replaced the bearings of the hoist by SKF or NSK | |
| <input type="checkbox"/> Hoist with horizontal guide wheel | |
| <input type="checkbox"/> Anti-skewing and slanting lift | |
| <input type="checkbox"/> Crane with horizontal guide wheel | |
| <input type="checkbox"/> Trolley with magnetic suction device | |

For lifting motor:

- | | |
|------------------------------------------------|------------------------------------------------|
| <input type="checkbox"/> Forced cooling fan | <input type="checkbox"/> Manual release device |
| <input type="checkbox"/> IP56 protection class | <input type="checkbox"/> Wear detection |



“

The operating experience of your overhead cranes are great, our workers are in love with your equipments, let their work become simple and efficiency.

”

**Mr. Mathew - Fabrication & Welding Supervisor
Kuwait Burgan Drilling Company**

Plug and play, no on-site debugging required

The electrical cabinet and drive adopt a heavy-duty connector form, which is plug and play. Before shipment, power on debugging is completed, and the main power box is matched. The installation and electrical wiring of the entire crane can be easily completed according to the installation manual in the equipment documentation. Better operating experience.



Ghana Engineering and Construction Company

CHS10t-24.7m-11.097m A6

CHS10t-24.7m-11.097m A6

CHS10t-24.7m-11.097m A6

CHD15t-24.7m-12.192m A6

CHD20t-24.7m-12.199m A6

CHD20t-24.7m-12.199m A6

Mexico Paper Mill

2023.11

CHD15+5t≤15t-20.244m-13.889m A6

2022.09

CHD15+5t≤15t-23.355m H=15m A5

2020.01

CHD15t+10t-17m H=14m A6

CHS5t-17m H=14m A6

CHS5t-17m H=14m A6

2016.07

CHD15t+10t-16.59m H=8.5m A5

CHS5t-16.59m-8.5m A5



Kuwait Oil Drilling Company

2021.10 CHD25t-16m H=6m A5
CHD25t-16m H=6m A5

2021.03 CHD18t+18t-40m H=12m A6
CHD18t+18t-40m H=12m A6

2018.03 CHD12t-16m H=6m A5
CHD12t-16m H=6m A5
CHD12t-16m H=6m A5
CHD12t-16m H=6m A5

2016.09 CH16t H=7m M5
CH16t H=7m M5
CH16t H=7m M5
CH16t H=7m M5

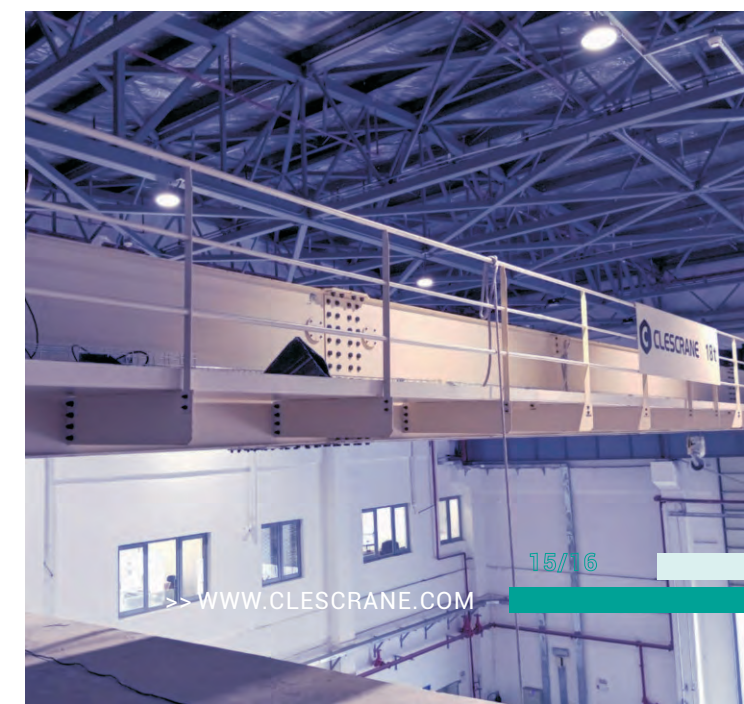
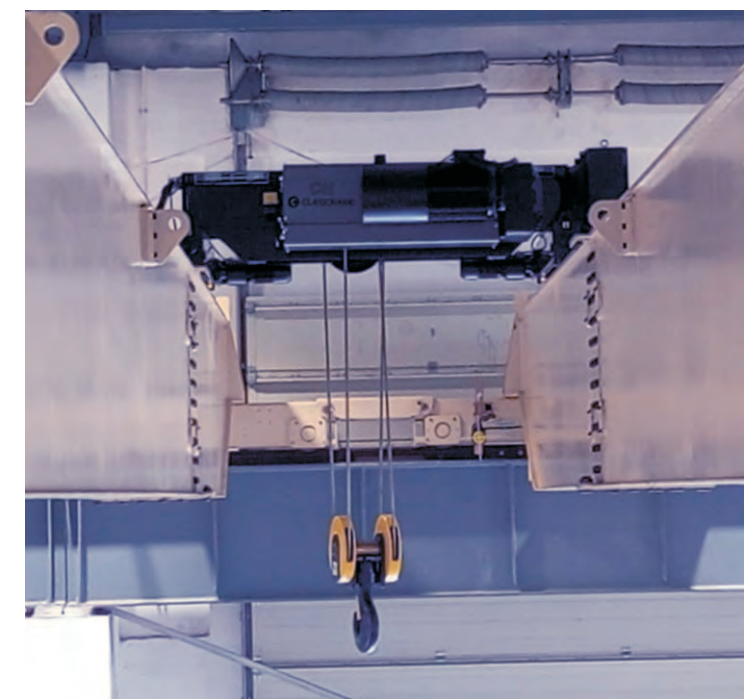


CLESCRANE

>>CHD DOUBLE GIRDER OVERHEAD CRANE

Nigerian Port

2022.07 CHD18t-22.5m H=10.268m A5



Aluminum Injection Mold Factory in Mexico

2022.09 CHGD50+25t≤50t-15.5m H=8.5m A5



CLESCRANE

>> CHD DOUBLE GIRDER OVERHEAD CRANE

CLESCRANE

South Africa Plastic Products Company

2017.07 CHD32t+5t -19.5m H=9m A5

Costa Rica Concrete Products Company

2016.09 CWD40t-20m H=8m A4
CHD20t-20m H=8m A4

Honduras Advertising Group

2017.03 CHD40t-10.9m H=15m A4

Argentina Construction Company

2017.12 CHD25t-15m H=6m A5
CHD25t-15m H=6m A5

Nigerian Ocean Gas Service Company

2018.10 CHD12.5t-15.5m H=8m A5

SERVICES

Local Installation and Debugging

CLESCRANE cooperates with local professional installation companies in the target market to provide local users with timely and efficient localized installation services. Imagine that you buy CLESCRANE equipment, if conditions permit, we can help you transport to the place where the equipment is used and here are professional teams to help you install and debug. Of course, there is also the necessary load testing work, turnkey work will help users experience a better service.

- A. Inspect the site in advance to determine the installation solution.
- B. Make preparations before installation to make sure nothing goes wrong.
- C. Electrical debugging.
- D. Professional load testing.
- E. Timely maintenance of subsequent equipment.

Spare Parts

With the continuous development of CLESCRANE's business and the upgrading of its products, we fully consider that our customers who have been cooperating with CLESCRANE will inevitably meet the demand of spare parts after 10 years. Thus, our technical center has retained all the relevant technical information, of course, as well as the consumable parts stocking. We consider the problem of spare parts that will cause you a headache in the future, at high cost or unable to purchase. So many of the parts we chose are what you can buy in local, such as brands SEW, SIEMENS, SCHNEIDER, SKF and so on. Customer focus is our fundamental.

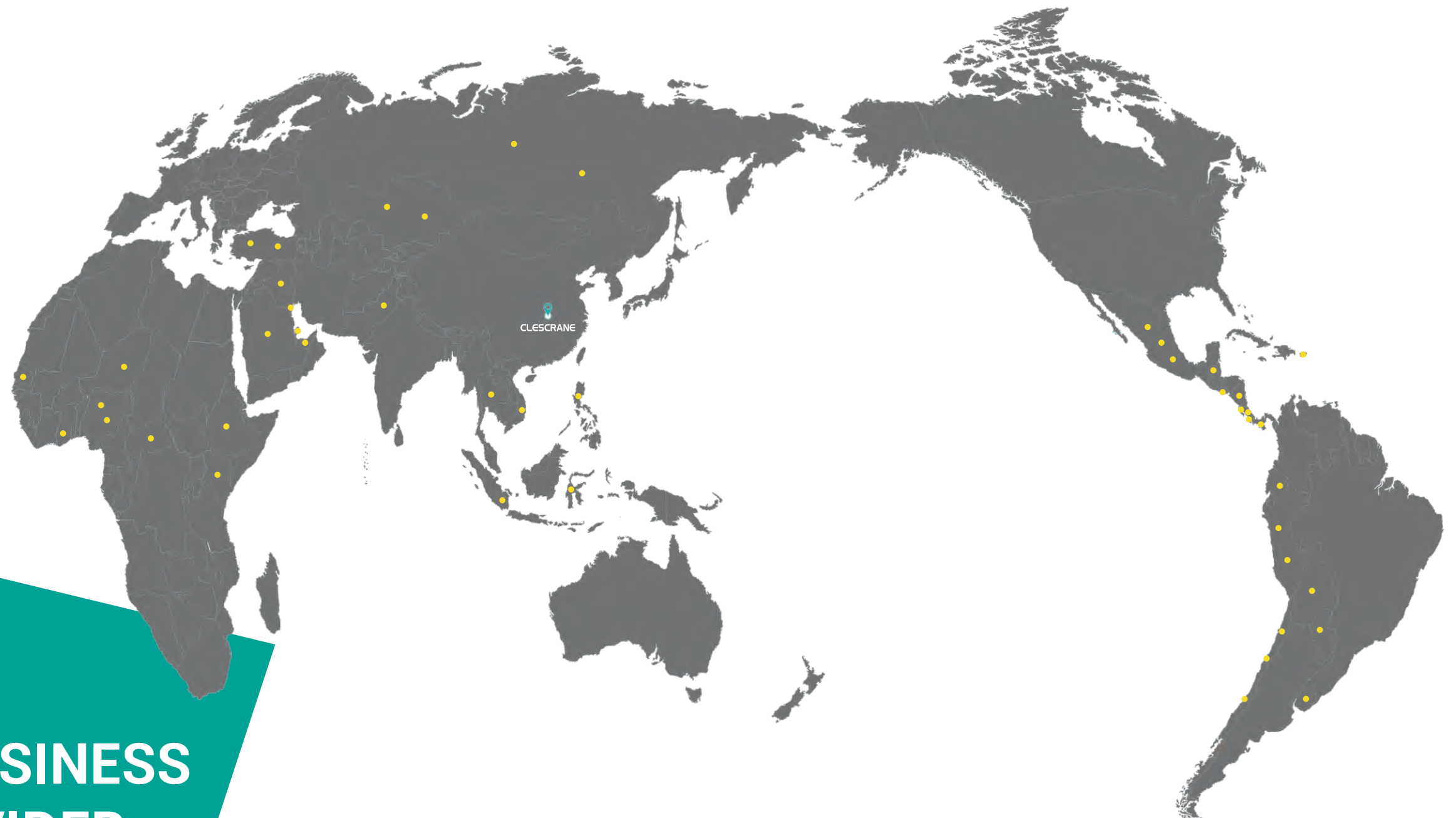
Preventive Inspection Service

To take precautions, CLESCRANE provides preventive inspection services. We will not wait for equipment to be shut down due to the inability to carry out periodic maintenance in time, which will affect your production. Although we have professional service provider partner in your country, even if we still send them to provide preventive maintenance for you, but we still recommend that you sign a preventive inspection service agreement with CLESCRANE, because CLESCRANE is responsible for the equipment they provided to the end.

Supplies Code System (SCS)

In order to facilitate our own design management of standard products and enhance the convenience for users to order spare parts, with the joint efforts of the technology center and the marketing department, our material coding system SCS has come out.





STANDARD BUSINESS SERVICE PROVIDER NETWORK

CLESCRANE doesn't want the business to grow too fast.
We want to be a slow company with responsibility.
With the expansion of business, we will gradually cultivate
more professional localization service partners.

- United Arab Emirates*3
- Saudi Arabia*2
- Kuwait*3
- Qatar*2
- Philippines*3
- Vietnam*1

- Russia*2
- Kazakhstan*1
- Pakistan*2
- Thailand*2
- Türkiye*3
- Singapore*2
- Indonesia*2

- Kenya*3
- Ghana*4
- Nigeria*4
- Senegal*2
- Peru*2
- Guatemala*1
- Paraguay*2

- Chile*3
- Panama*2
- Ecuador*1
- El Salvador*1
- Bolivia*1
- Uruguay*1
- Costa Rica*3
- Mexico*3
- Puerto Rico*1
- Nicaragua*1

.....